



# V1-M

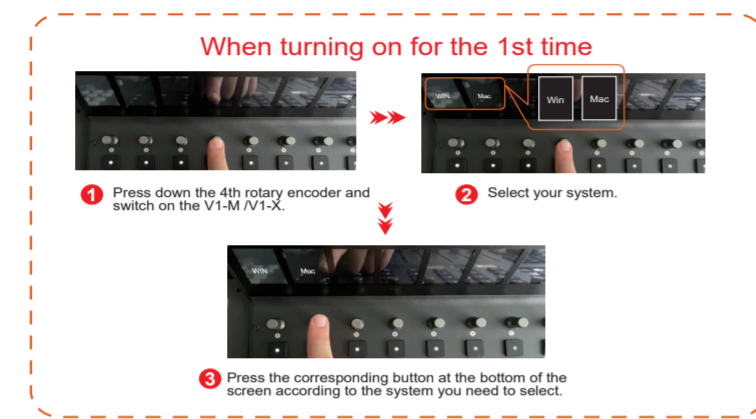
ENGLISH V1-M MIDI DAW control surface Quick Start Guide  
 FRANÇAIS V1-M MIDI Daw control surface Guide de démarrage rapide  
 DEUTSCHE V1-M MIDI DAW Control Oberfläche Schnellstartanleitung  
 中文 (繁体) V1-M MIDI 快速安裝指南

ITALIANO V1-M MIDI DAW superficie di controllo Guida rapida  
 ESPAÑOL Guía de inicio rápido para la superficie de control V1 - M Midi Daw  
 日本語 V1-M MIDI/ オーディオコントロールサーフィス・クイックスタートガイ  
 中文 (简体) V1-M MIDI 快速安裝指南

- Unpack / Déballer / Auspacken / Disimballare il contenuto
- Desembalaje / パッケージを開く / 打開包裝 / 打开包装



- Setup / Installer / Konfiguration / Impostare
- Preparar / セットアップ / 接続 / 连接



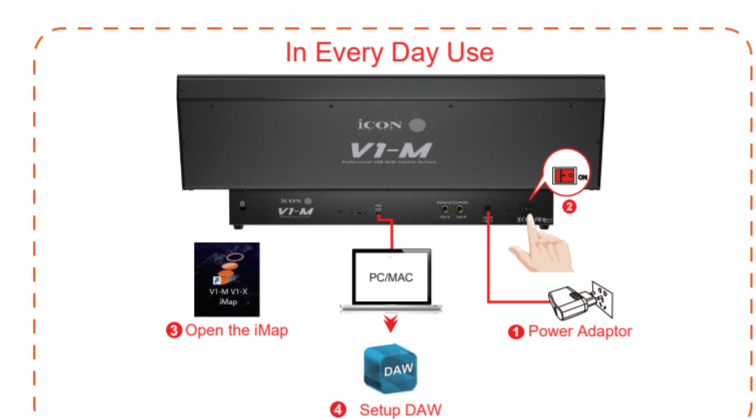
- Setting up the DAWs / Configurer un Daw / Einrichtung der DAWs / Istituzione delle DAW
- Establecer Daw / DAW の設定 / 設定 DAW / 设置 DAW

**Win**  
 ICON V1-M V1.01 → DAW #1  
 MIDIN2(V1-M V1.01) → DAW #2  
 MIDIN3(V1-M V1.01) → DAW #3  
 MIDIN4(V1-M V1.01) → IMAP

**Mac**  
 ICON V1-M V1.01 Port1 → DAW #1  
 ICON V1-M V1.01 Port2 → DAW #2  
 ICON V1-M V1.01 Port3 → DAW #3  
 ICON V1-M V1.01 Port4 → IMAP

Note: MIDI port 4 is used by the iCON Pro Audio software, iMAP(TM), to change the three DAWs you use, to update firmware and to program the 24 panel touchscreen with the functions of your choice.

ENGLISH Please visit [www.iconproaudio.com](http://www.iconproaudio.com) and go to the product page's download section to download its driver. Follow the step by step instructions to complete the installation.  
 FRANÇAIS Veuillez visiter [www.iconproaudio.com](http://www.iconproaudio.com) et accédez à la section de téléchargement de la page du produit pour télécharger son pilote. Suivez les instructions pas à pas pour terminer l'installation.  
 DEUTSCHE Besuchen Sie [www.iconproaudio.com](http://www.iconproaudio.com) und gehen Sie zum Download-Bereich der Produktseite, um den Treiber herunterzuladen. Folgen Sie den Schritt-für-Schritt-Anweisungen, um die Installation abzuschließen.  
 ITALIANO Silakan kunjungi [www.iconproaudio.com](http://www.iconproaudio.com) dan buka bagian unduhan halaman produk untuk mengunduh drivernya. Attensi pesediquamente alle istruzioni per completare l'installazione.  
 ESPAÑOL Visite [www.iconproaudio.com](http://www.iconproaudio.com) y vaya a la sección de descarga de la página del producto para descargar su controlador. Siga las instrucciones paso a paso para completar la instalación.  
 日本語 [www.iconproaudio.com](http://www.iconproaudio.com) にアクセスし、製品ページのダウンロードセクションにアクセスして、ドライバーをダウンロードしてください。段階ごとの指示に従って、インストールを完了します。  
 中文 (繁体) 請訪問 [www.iconproaudio.com](http://www.iconproaudio.com) 並轉到產品頁的下載部分下載其驅動程序。按照步驟說明完成安裝。  
 中文 (简体) 请访问 [www.iconproaudio.com](http://www.iconproaudio.com) 并转到产品页的下載部分下載其驅動程序。按照步驟說明完成安裝。



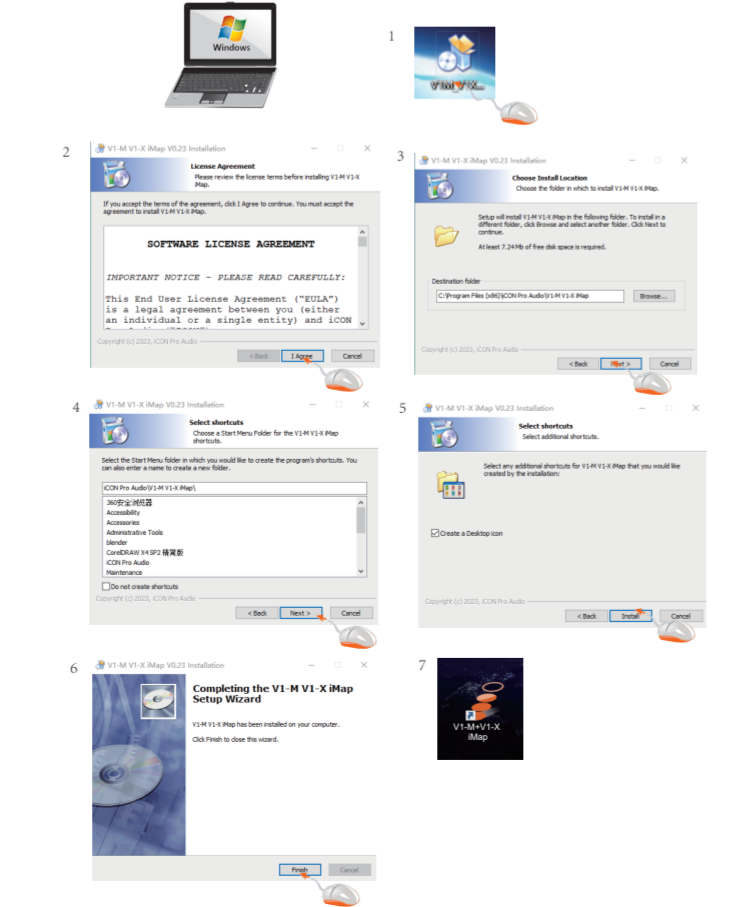
**Remember**  
 Every time you launch the V1-M or V1-X  
 Controller  
 iMAP  
 DAW

ENGLISH **Note:** Please do not connect your V1-M at this stage.  
 FRANÇAIS **Remarque :** Veuillez ne pas raccorder votre V1-M maintenant.  
 DEUTSCHE **Hinweis:** Schließen Sie die V1-M Ba ureihe noch nicht an.  
 ITALIANO **Attenzione:** Non collegare ancora V1-M durante questa fase.  
 ESPAÑOL **Nota:** Por favor, no conecte su V1-M en este paso.  
 日本語 **注意:** この段階では V1-M に接続しないでください。  
 中文 (繁体) **注意:** 請先不要連接你的 V1-M 到你的電腦上。  
 中文 (简体) **注意:** 請先不要連接你的 V1-M 到你的電腦上。

- Mac / Turn on your Mac / Allumer votre Mac / Mac einschalten / Accendere il Mac
- Encender la Mac / コンピューターの電源を入れます / 打開你的 Mac / 打开你的 Mac



- PC / Turn on your computer / Allumer votre PC / PC einschalten / Accendere il PC
- Encender la PC / コンピューターの電源を入れます / 打開你的電腦 / 打开你的电脑



## For Mackie Control / HUI

(For information on how to install [script], please see the manual)

**Bitwig**

1. Bitwig Settings -> 2. Settings -> 3. Controllers -> 4. Add Controller -> 5. Mackie -> 6. Mackie Control -> 7. Add

**Logic Pro**

1. Logic Pro -> 2. Control Surfaces -> 3. Setup... -> 4. Mackie Control

**Control Surface Setup**

1. New -> 2. Mackie Control -> 3. Mackie Control -> 4. Add

**Waveform**

1. Settings -> 2. MIDI Devices -> 3. Add -> 4. Mackie Control -> 5. Add

**Logic Pro**

1. Logic Pro -> 2. Control Surfaces -> 3. Setup... -> 4. Mackie Control

**Control Surface Setup**

1. New -> 2. Mackie Control -> 3. Mackie Control -> 4. Add

**Cubase/Nuendo**

1. Studio -> 2. Studio Setup... -> 3. MIDI Connections... -> 4. Add -> 5. Mackie Control -> 6. Add

**Logic Pro**

1. Logic Pro -> 2. Control Surfaces -> 3. Setup... -> 4. Mackie Control

**Control Surface Setup**

1. New -> 2. Mackie Control -> 3. Mackie Control -> 4. Add

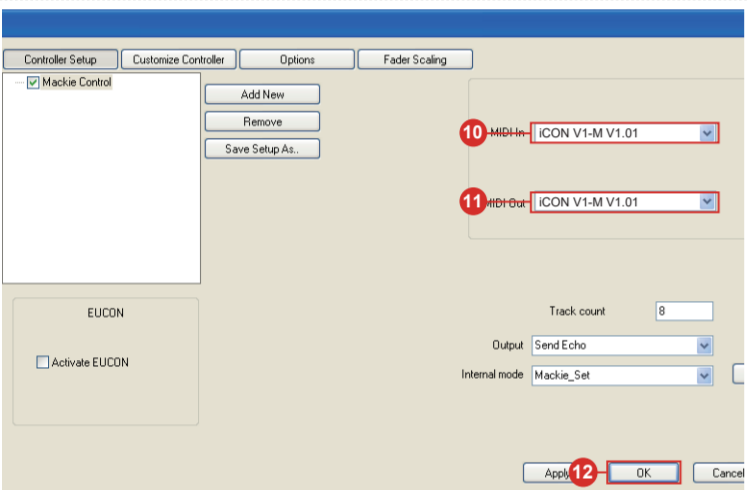
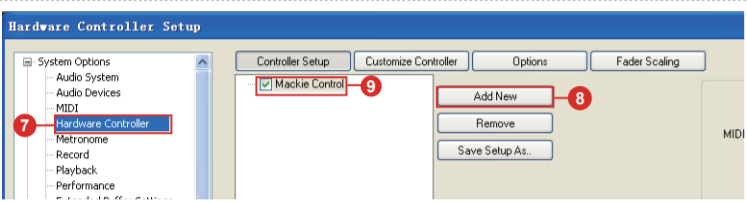
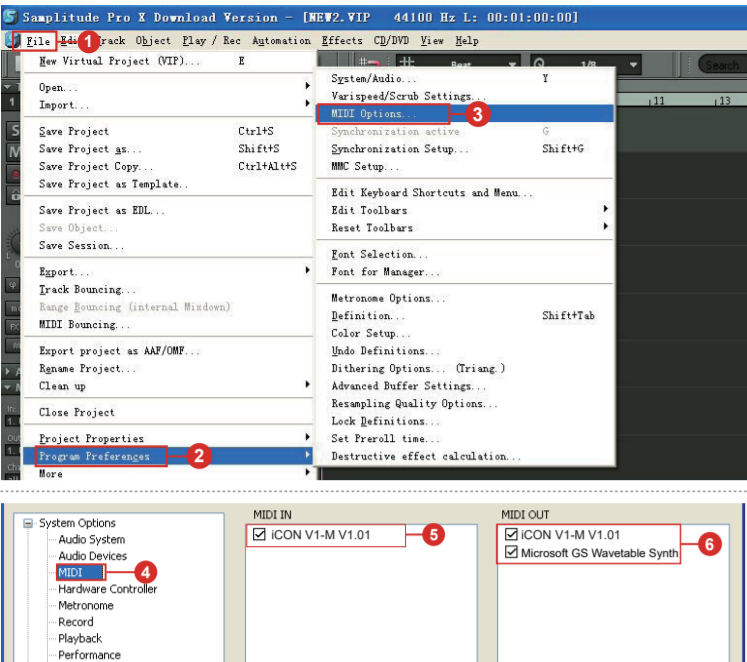
**Ableton Live**

1. Options -> 2. MIDI -> 3. MIDI Mapping -> 4. Add -> 5. Mackie Control -> 6. Add

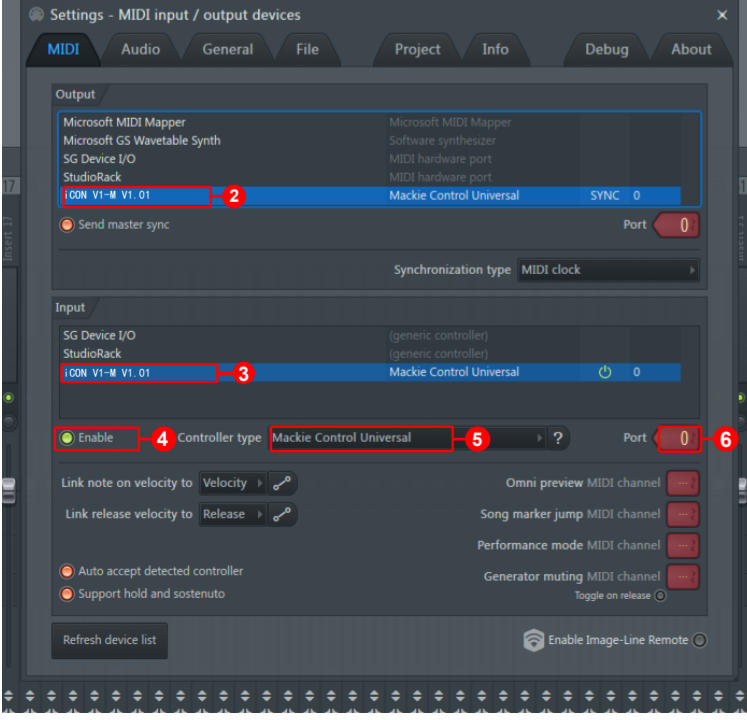
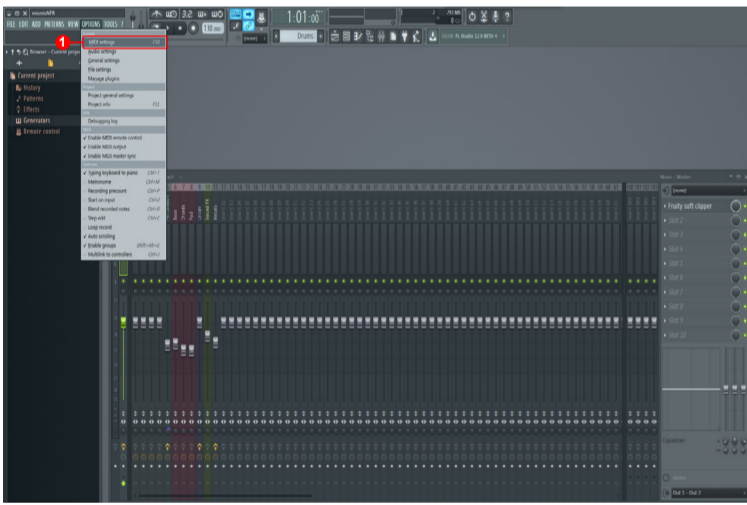
**Control Surface Setup**

1. New -> 2. Mackie Control -> 3. Mackie Control -> 4. Add

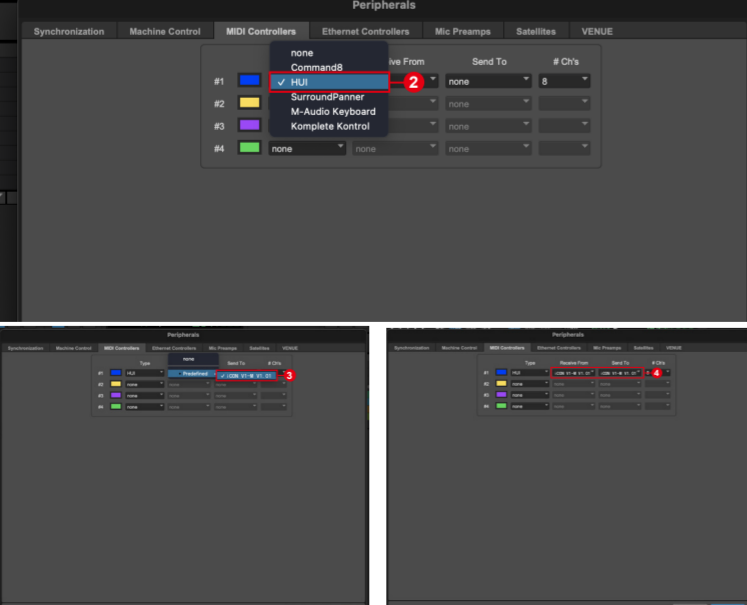
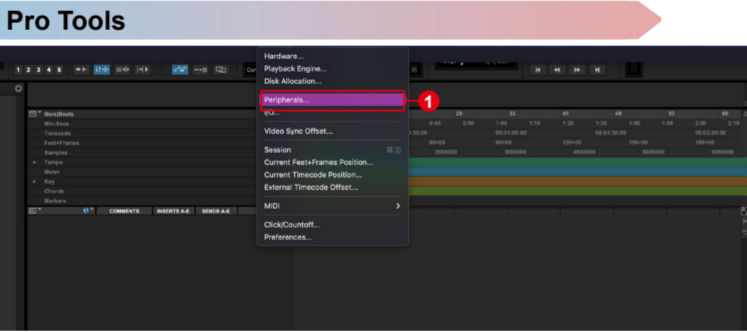
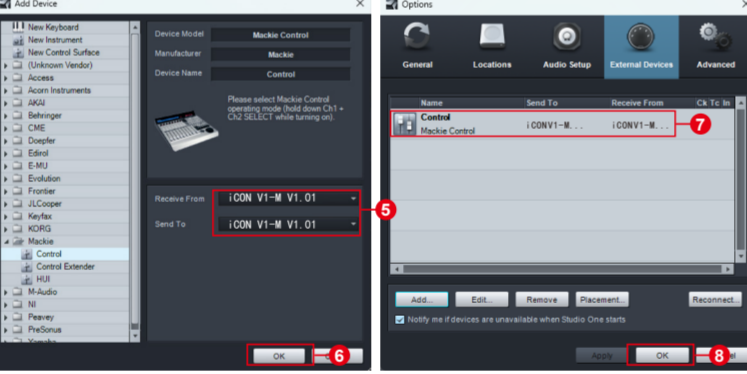
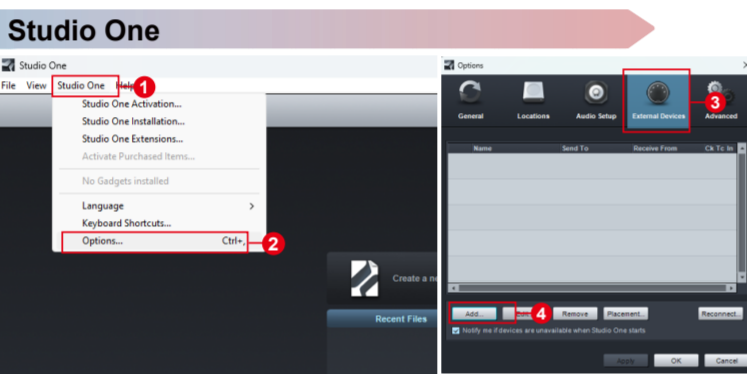
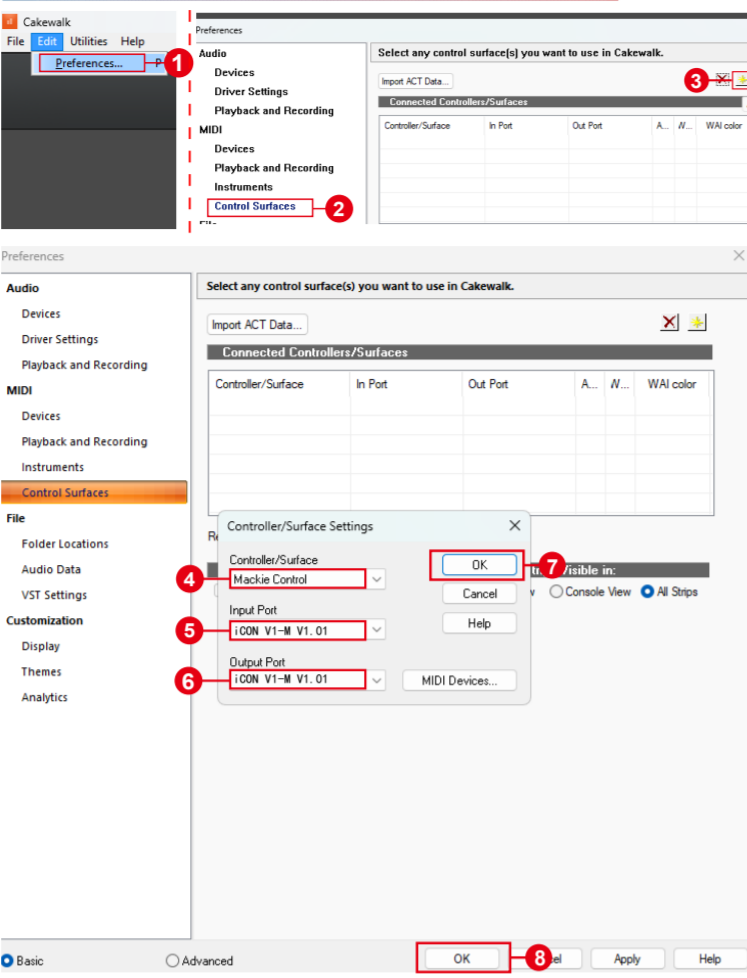
# Samplitude



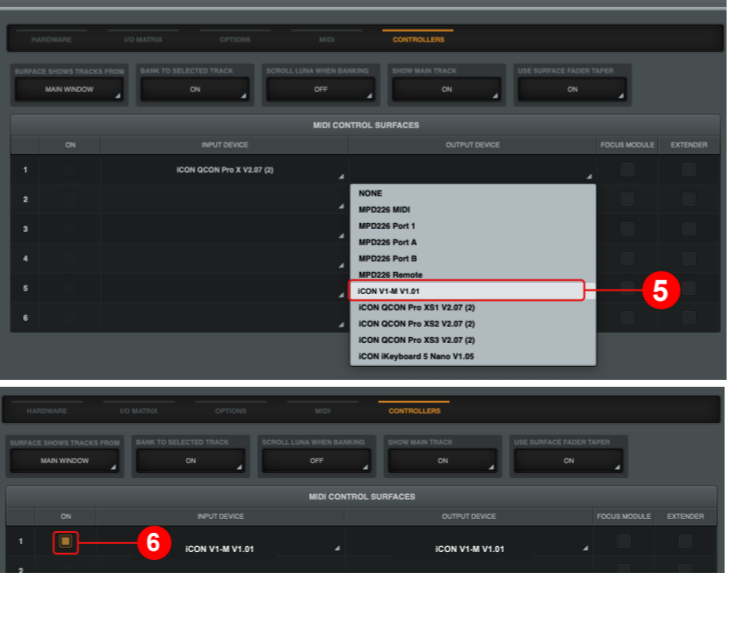
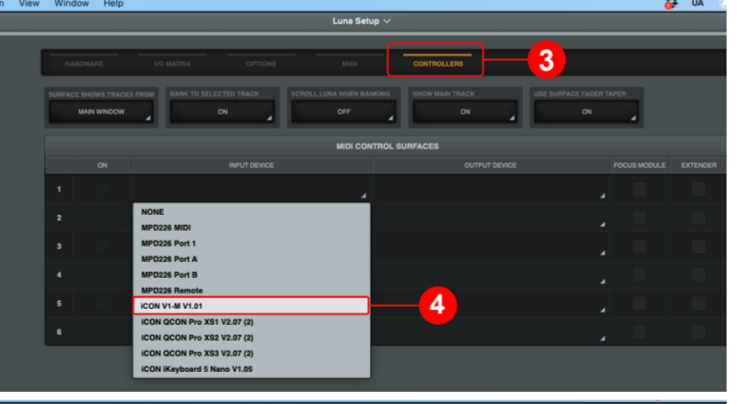
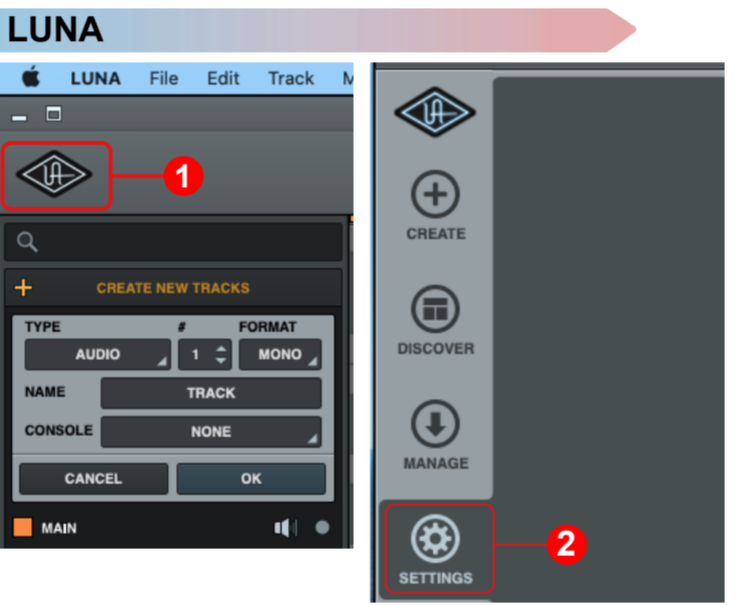
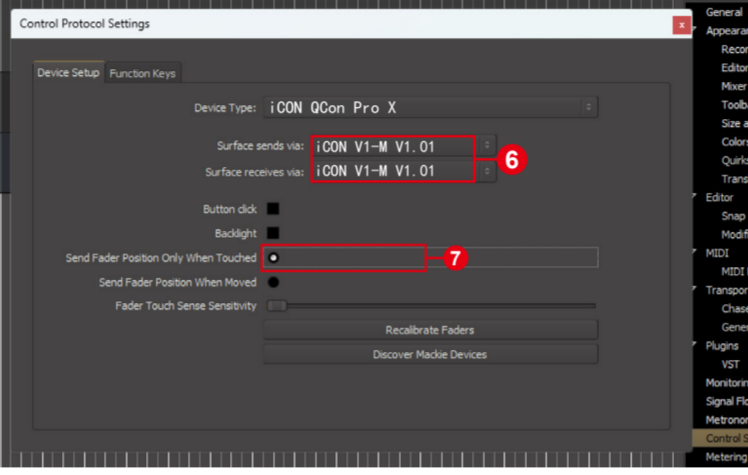
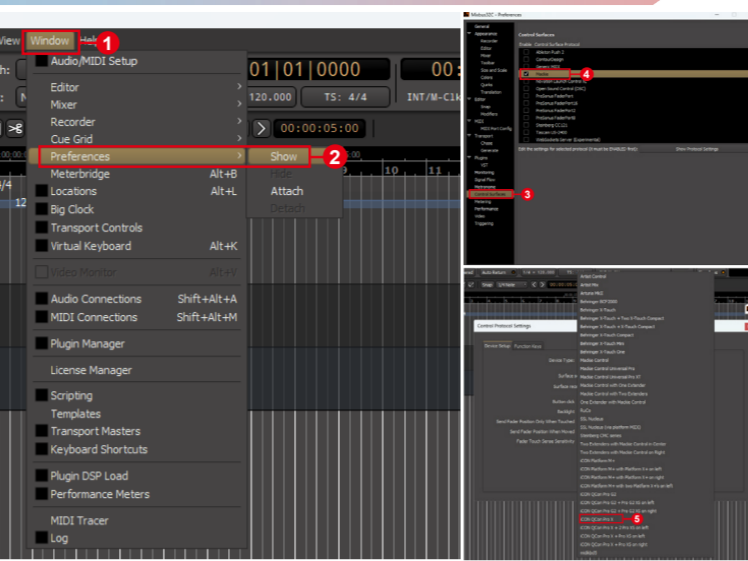
# FL-Studio



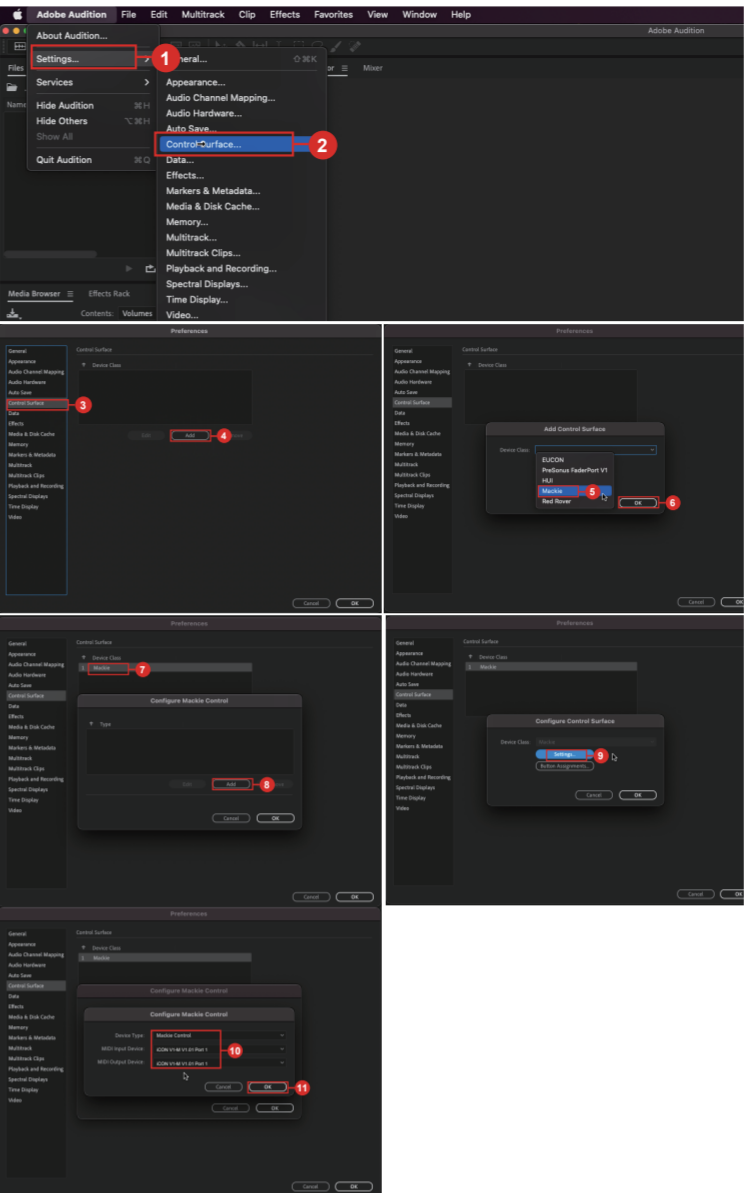
# Cakewalk



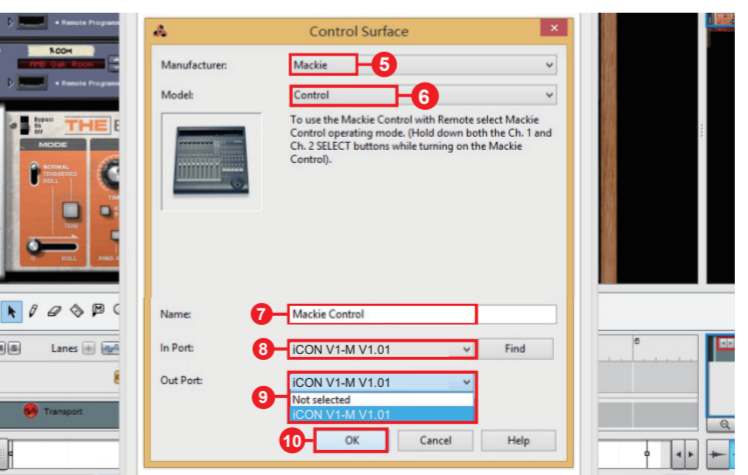
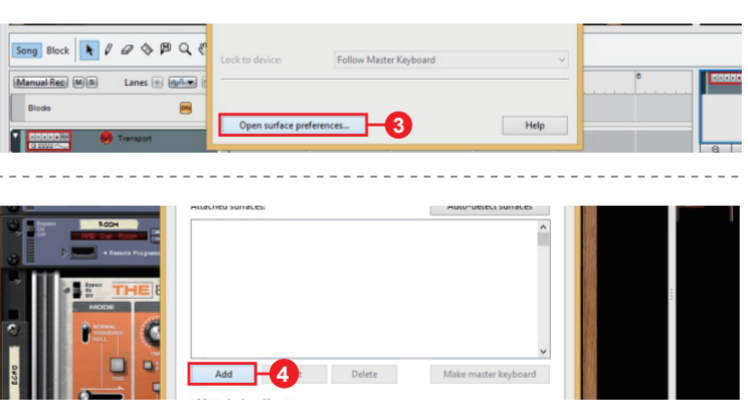
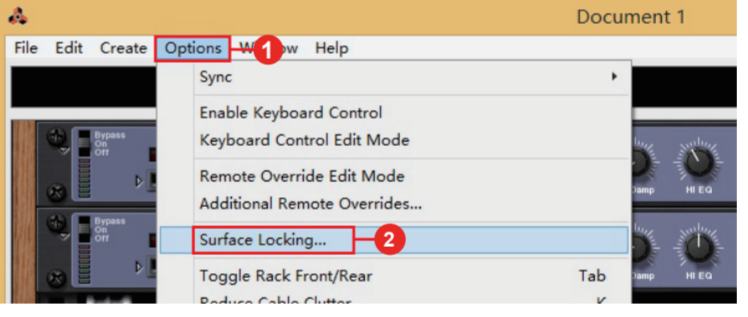
# Mixbus 32C



# Audition



# Reason



# Reaper

