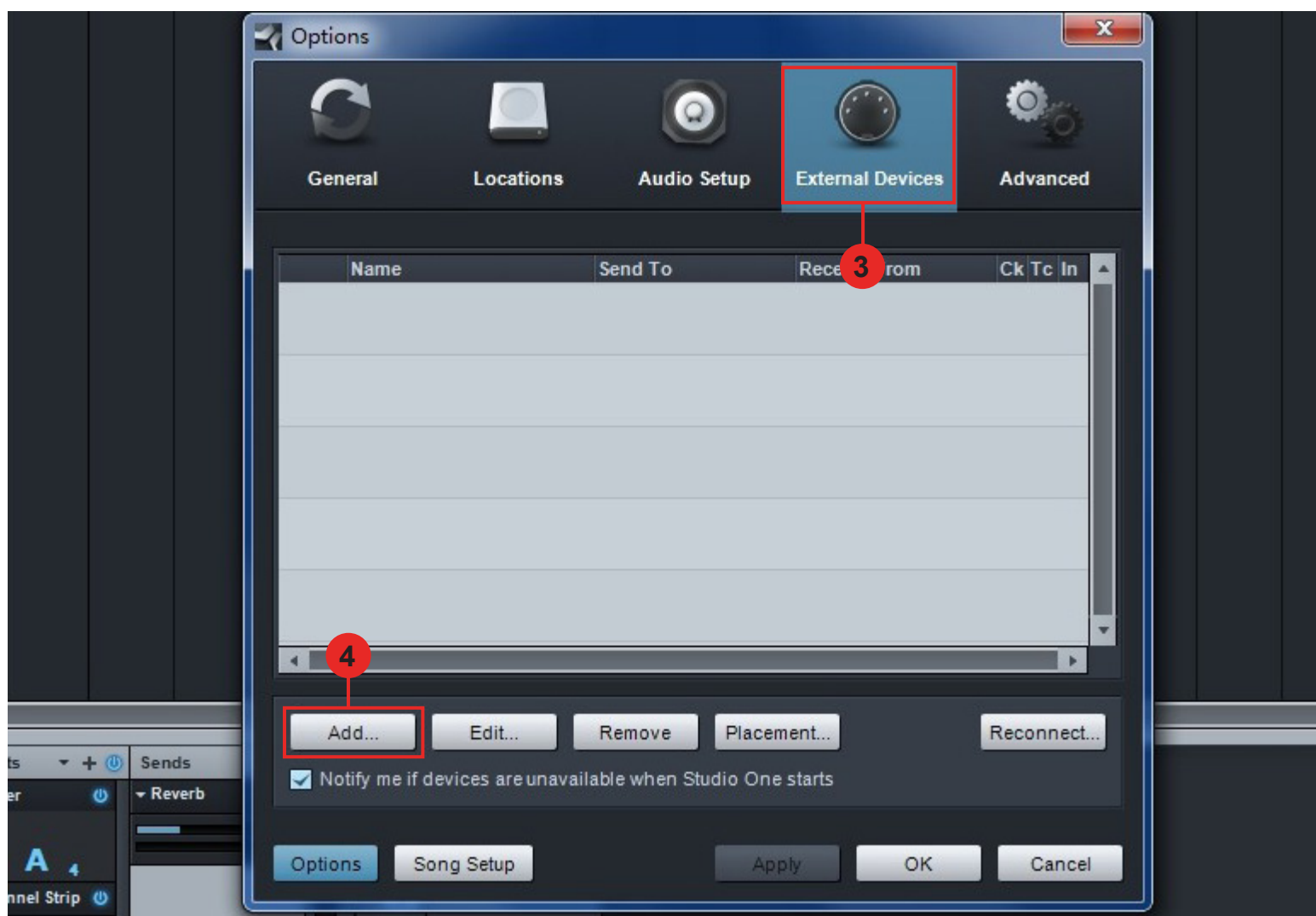
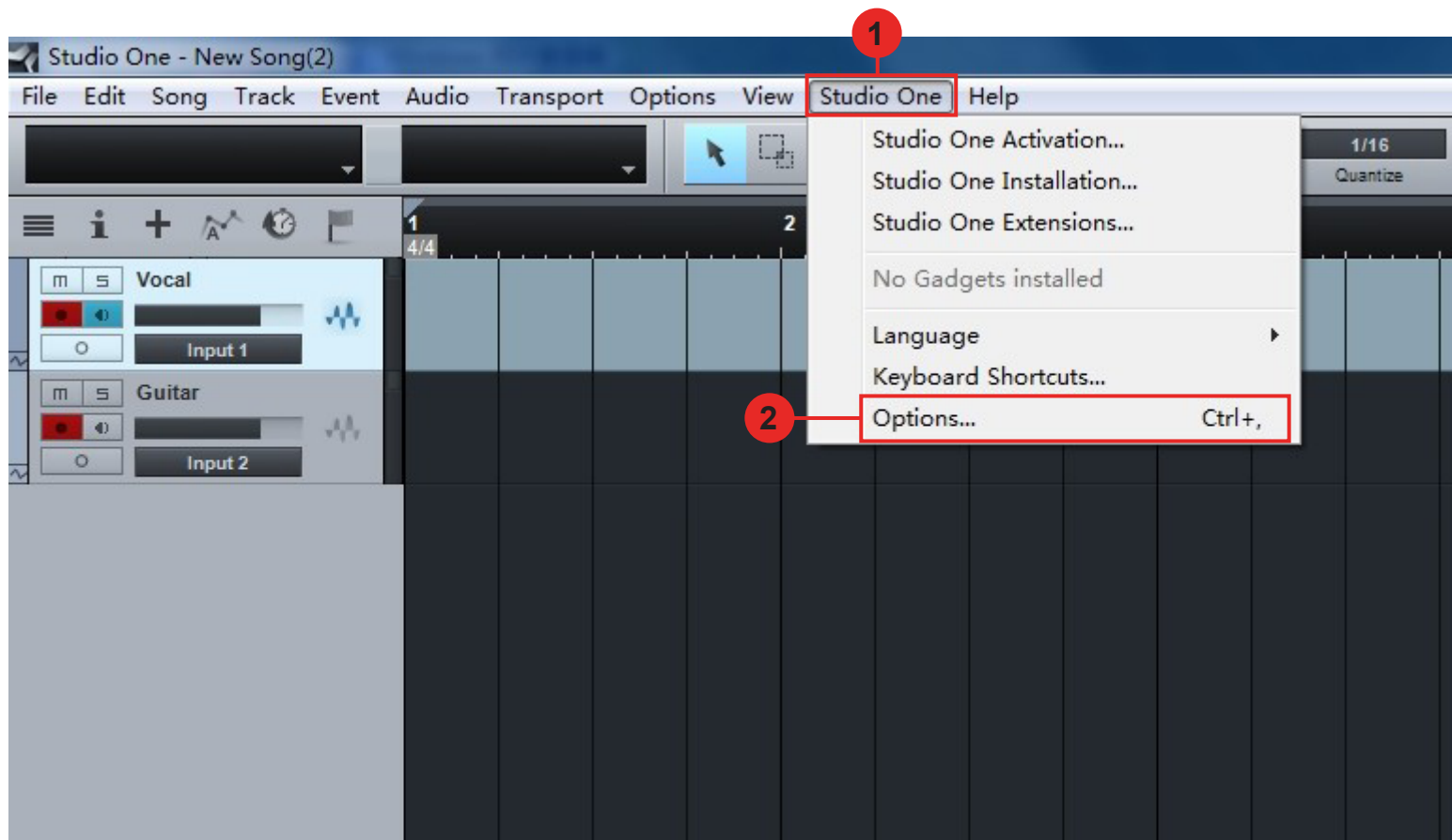
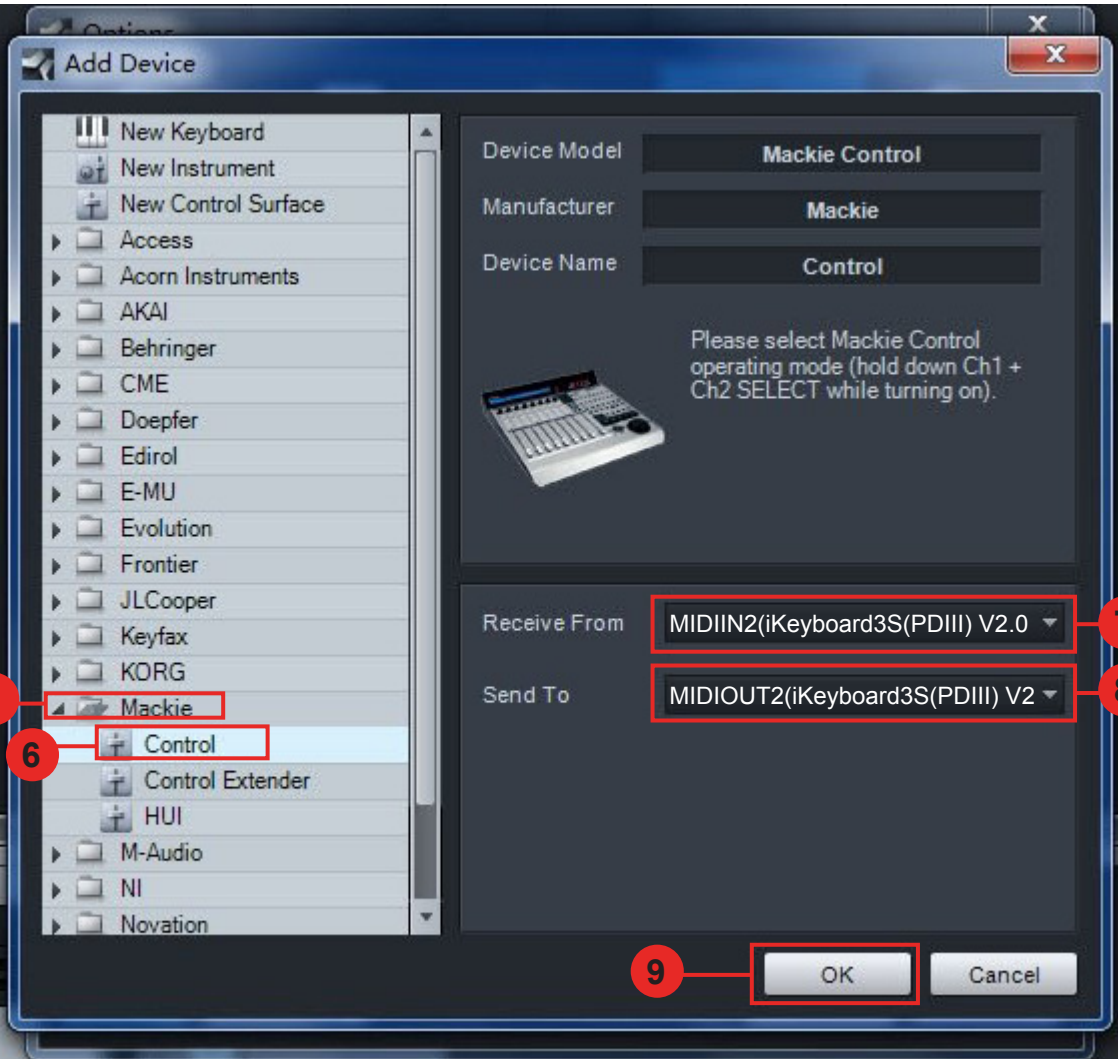


Setup up for your iKeyboard 3S(PDIII) controller section





5

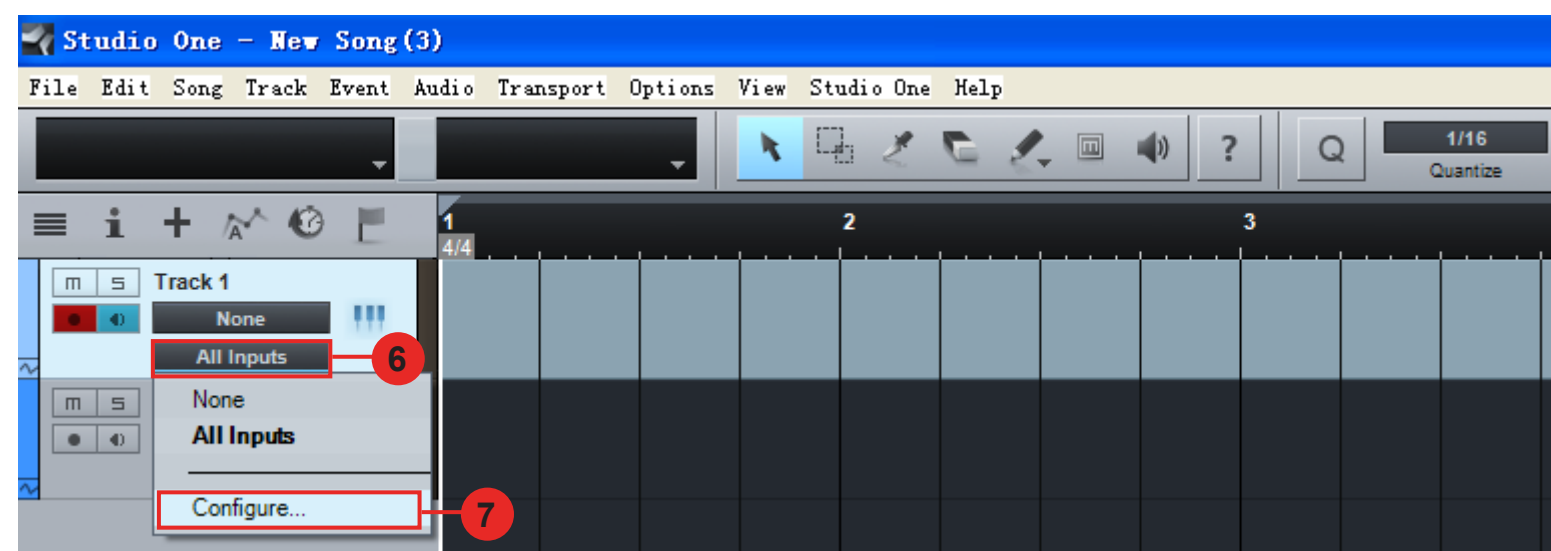
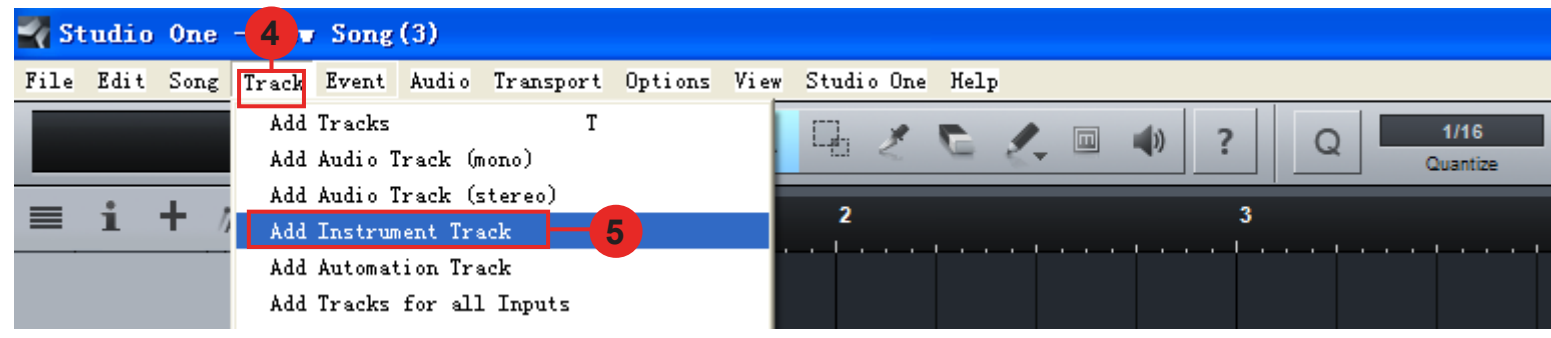
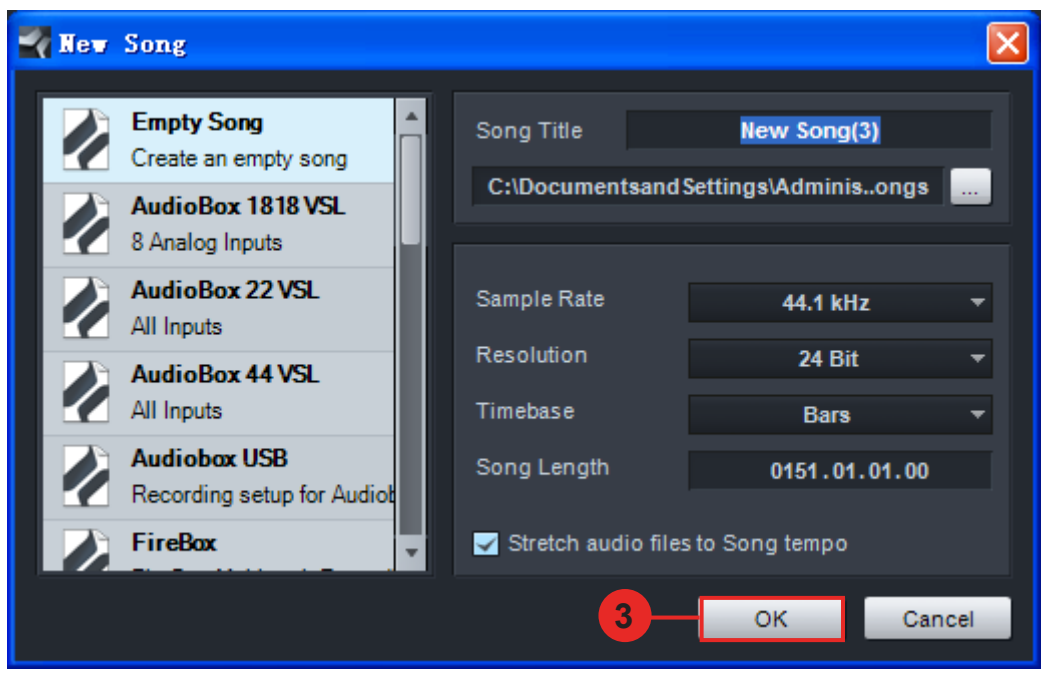
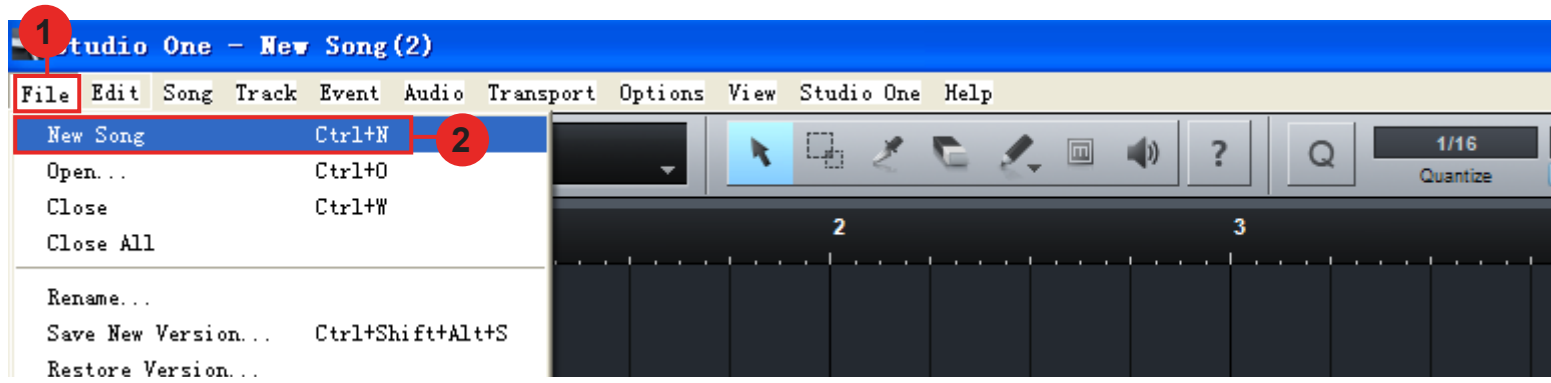
6

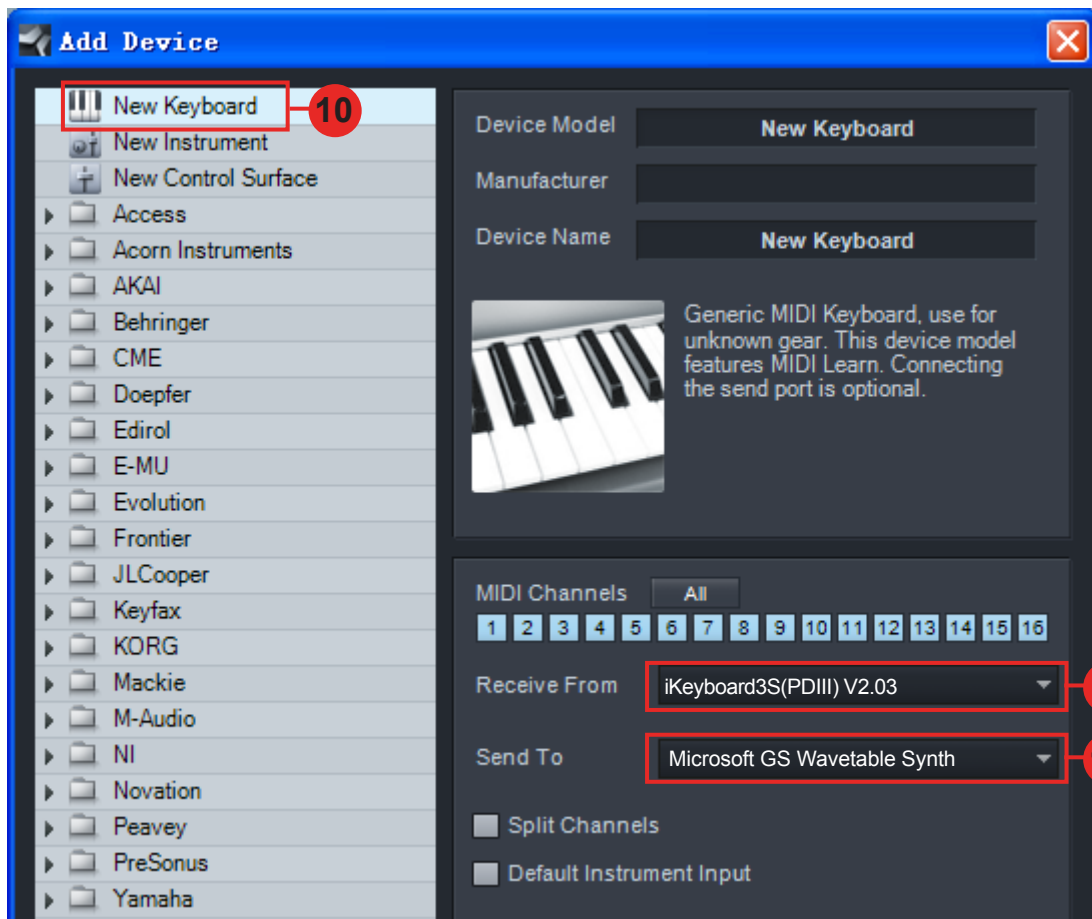
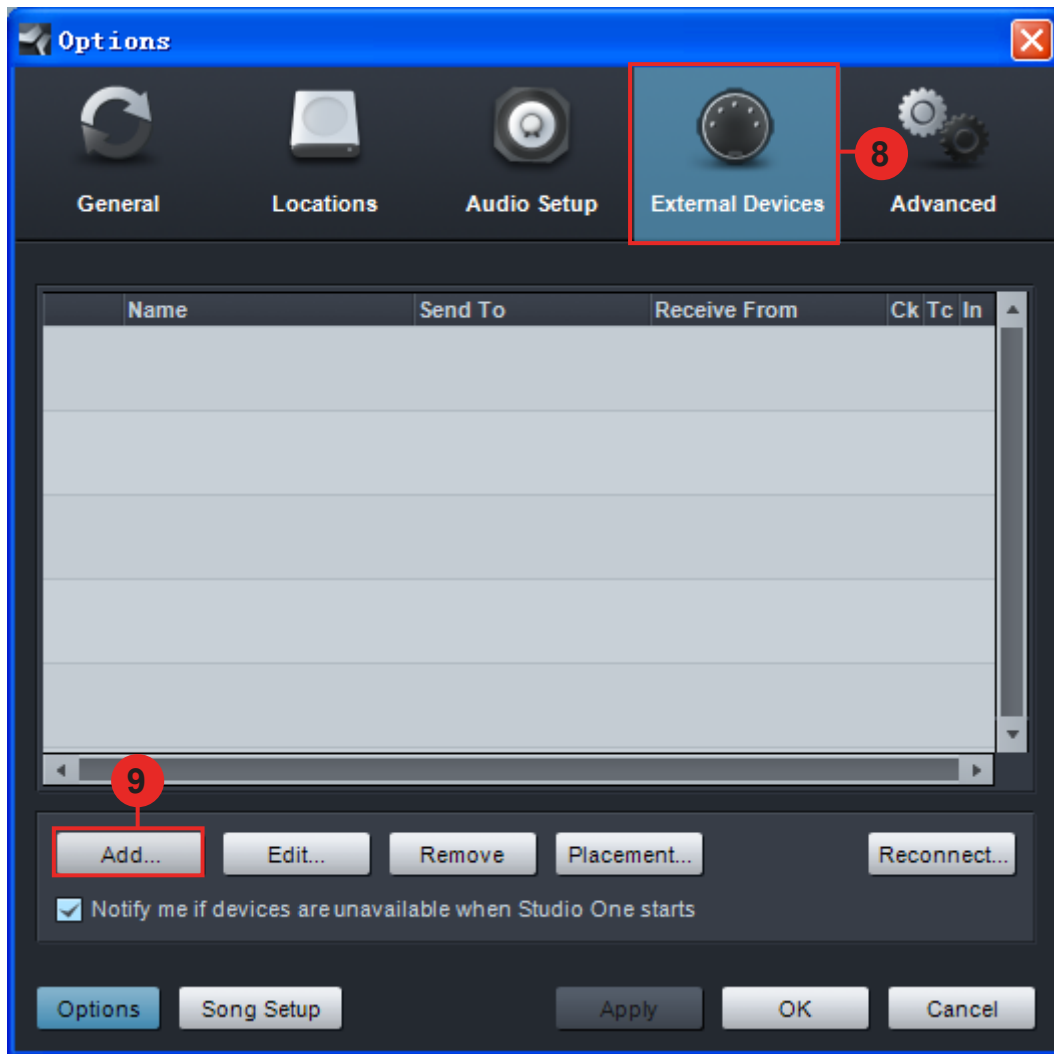
7

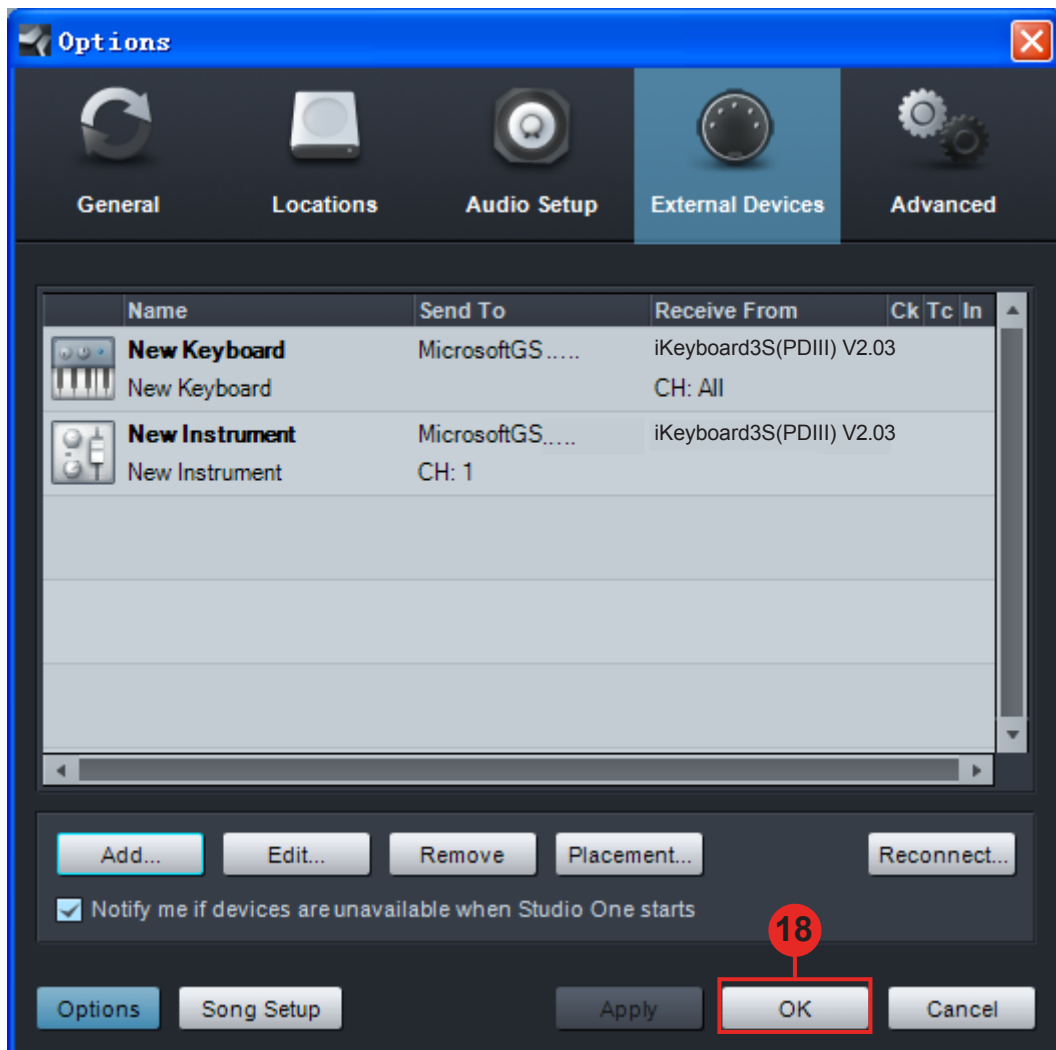
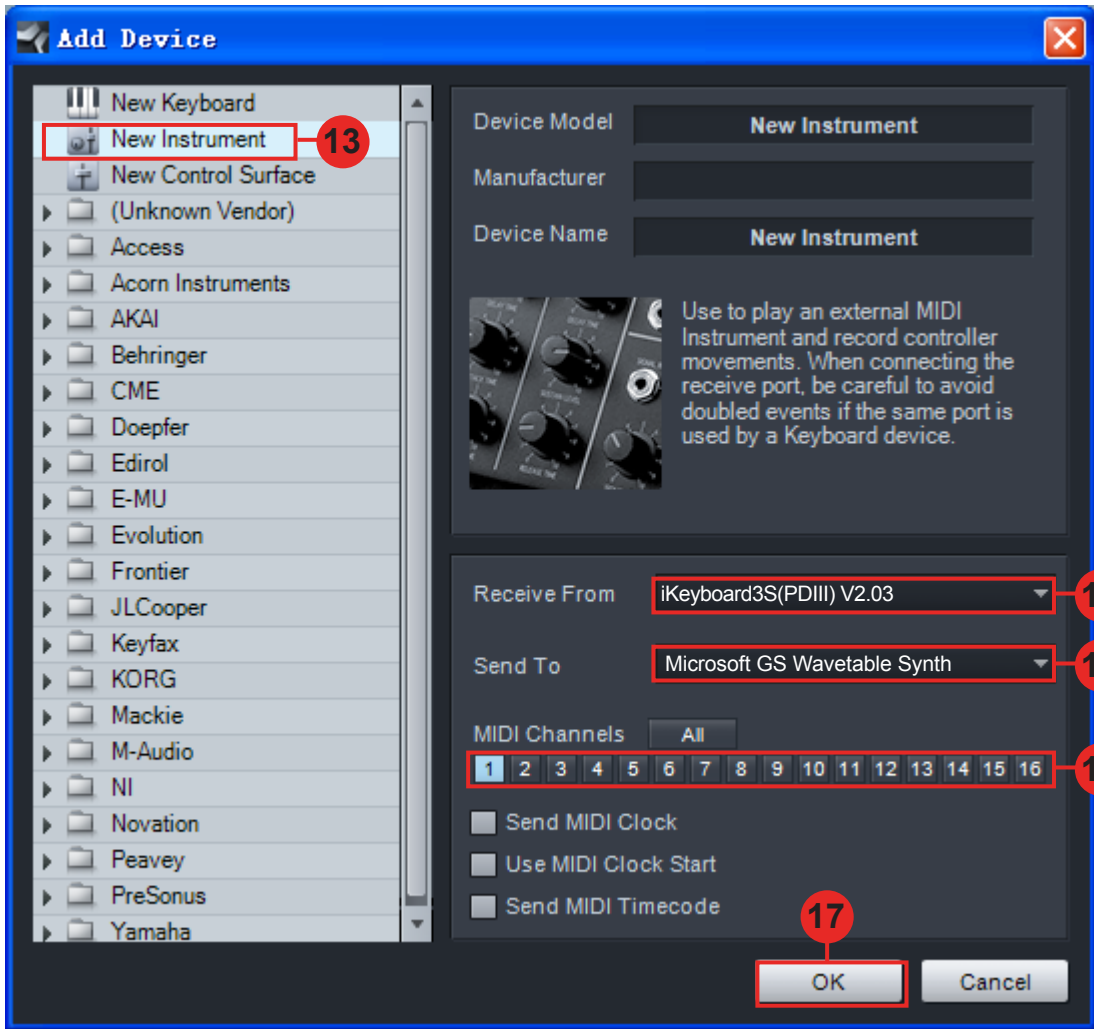
8

9

Setup for your iKeyboard 3S(PDIII) Keyswitch instrument input section







The screenshot displays the Studio One software interface. At the top, a menu bar includes 'File', 'Edit', 'Song', 'Track', 'Event', 'Audio', 'Transport', 'Options', 'View', 'Studio One', and 'Help'. Below the menu bar is a control bar with a 'Volume' knob set to '+10.0', a 'Main' dropdown, and various tool icons. The main workspace shows a piano roll for 'Track 1' with a 4/4 time signature and a timeline from 1 to 73. On the left, a track list shows 'Track 1' with two options: 'New Instrument' (labeled 19) and 'New Keyboard' (labeled 20). Below these, a dropdown menu is open, showing 'None', 'All Inputs', and 'New Keyboard'.