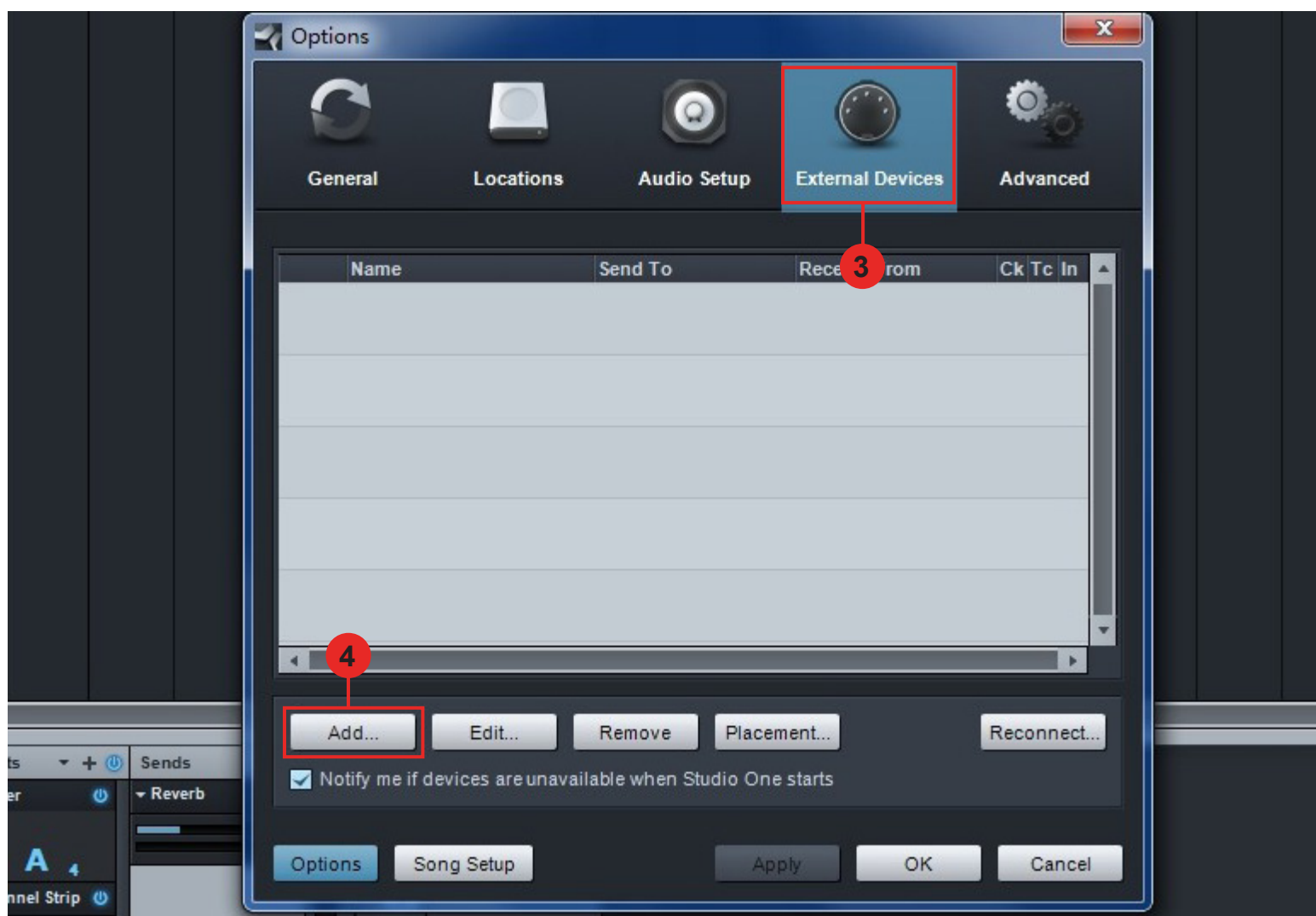
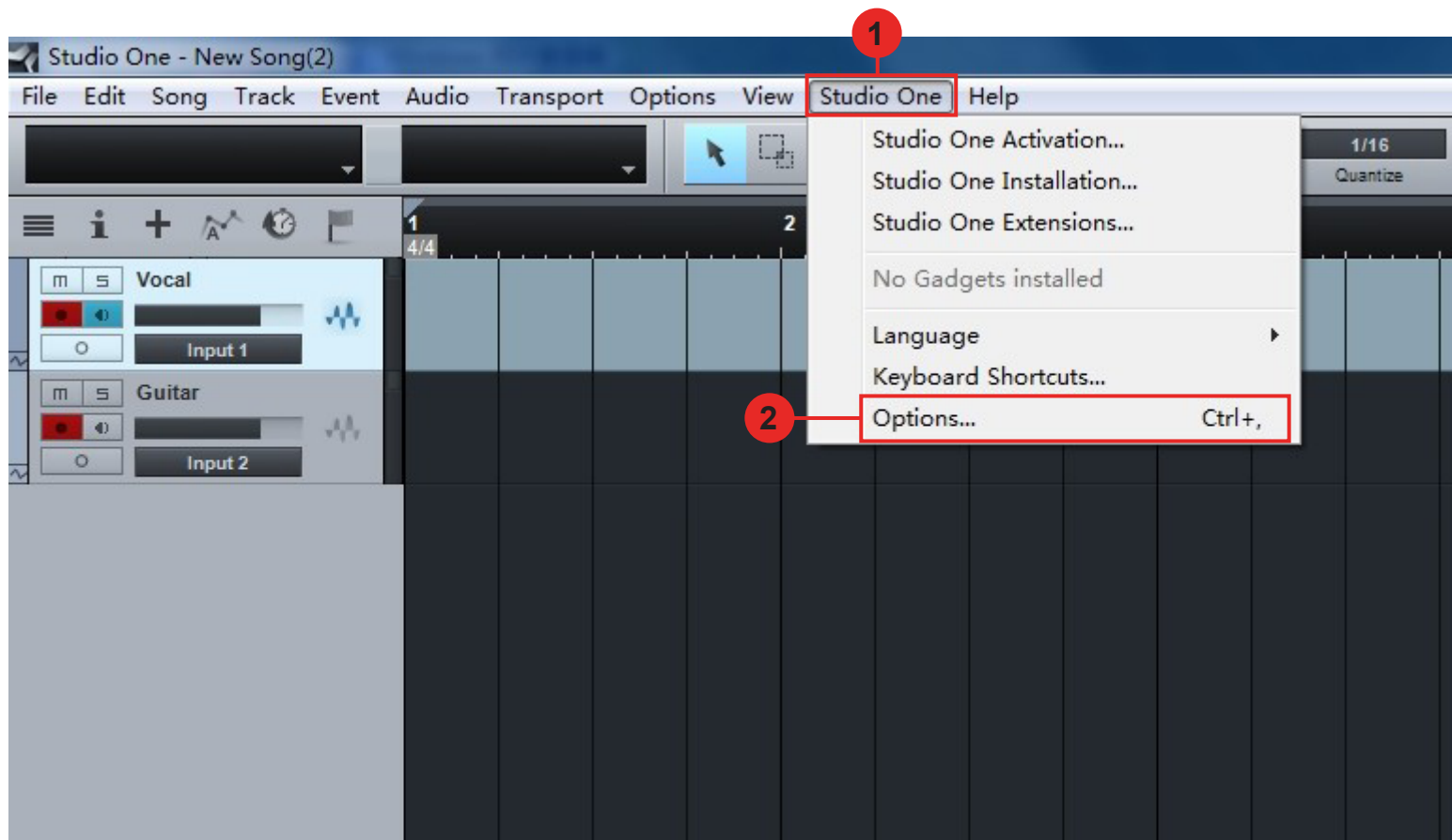
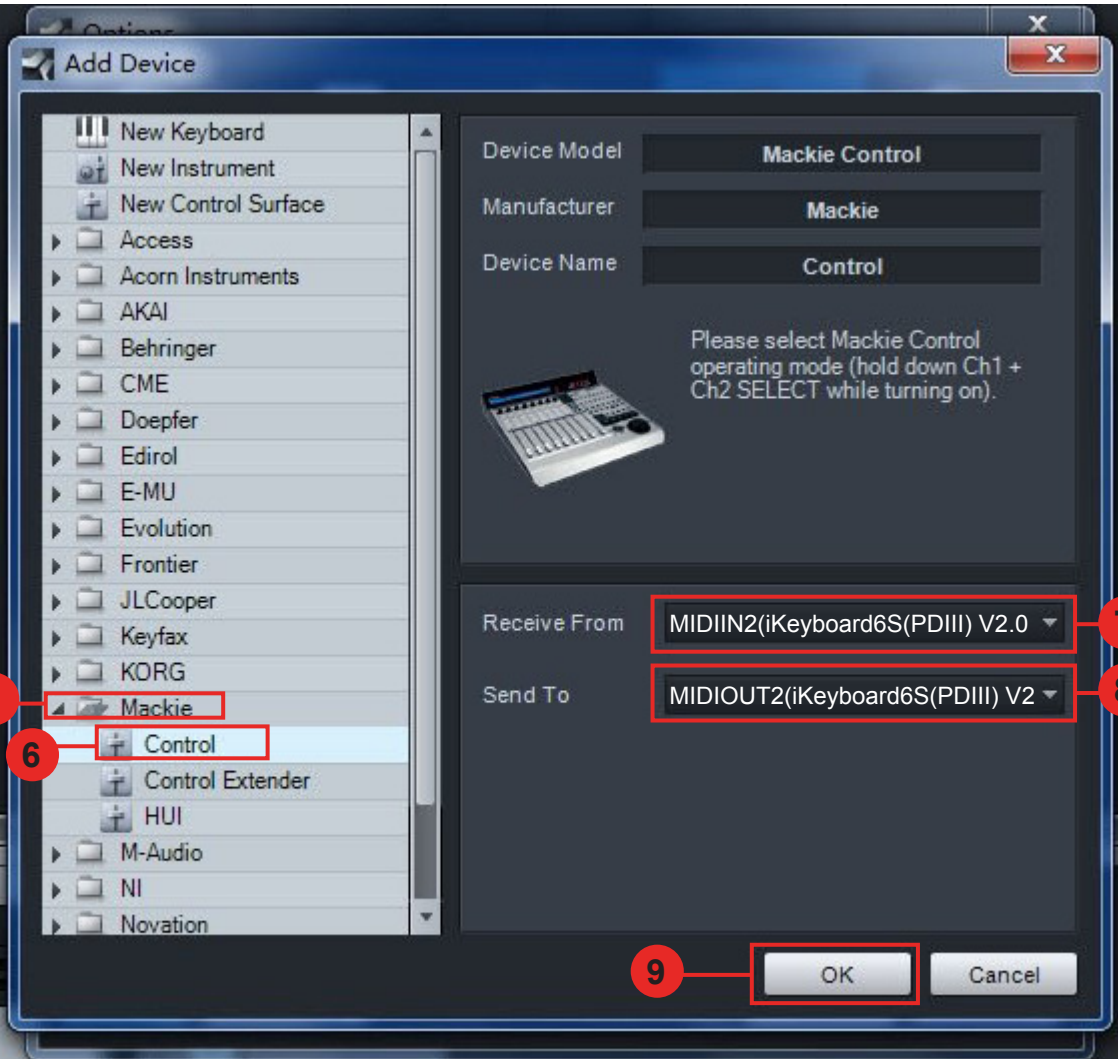
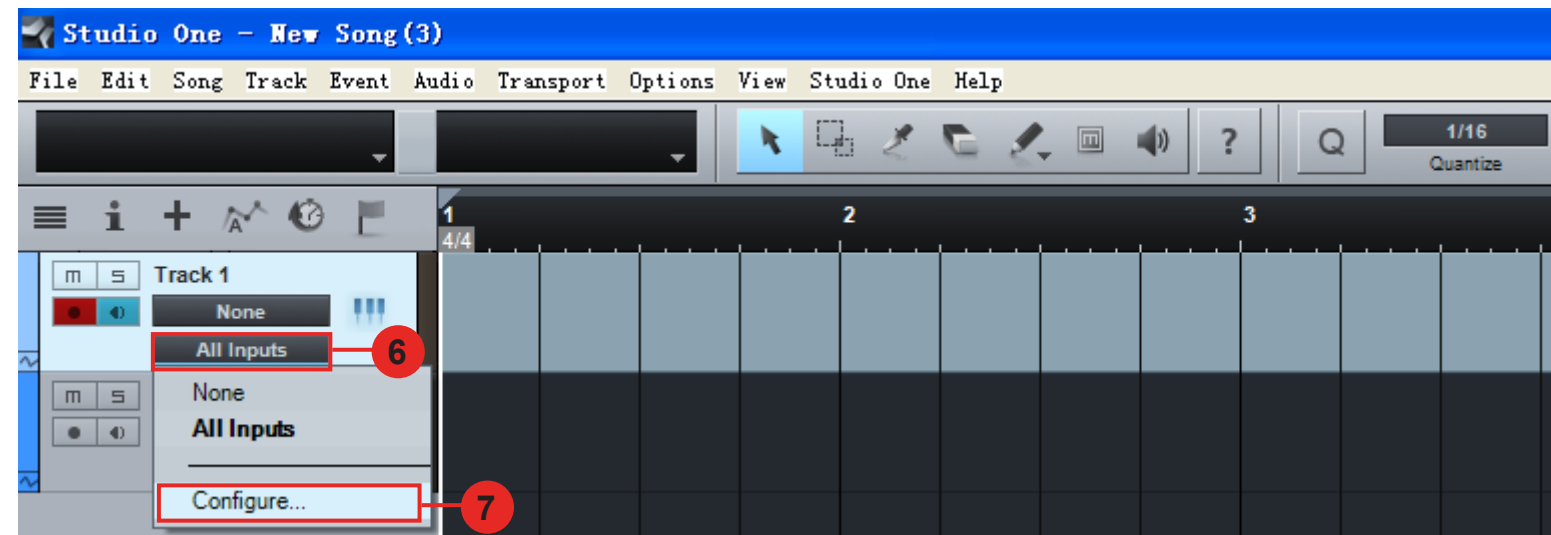
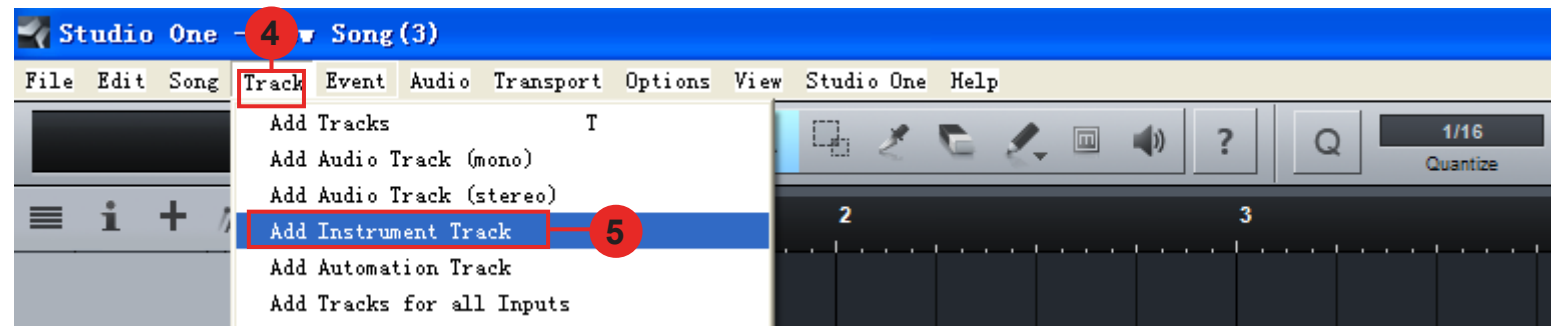
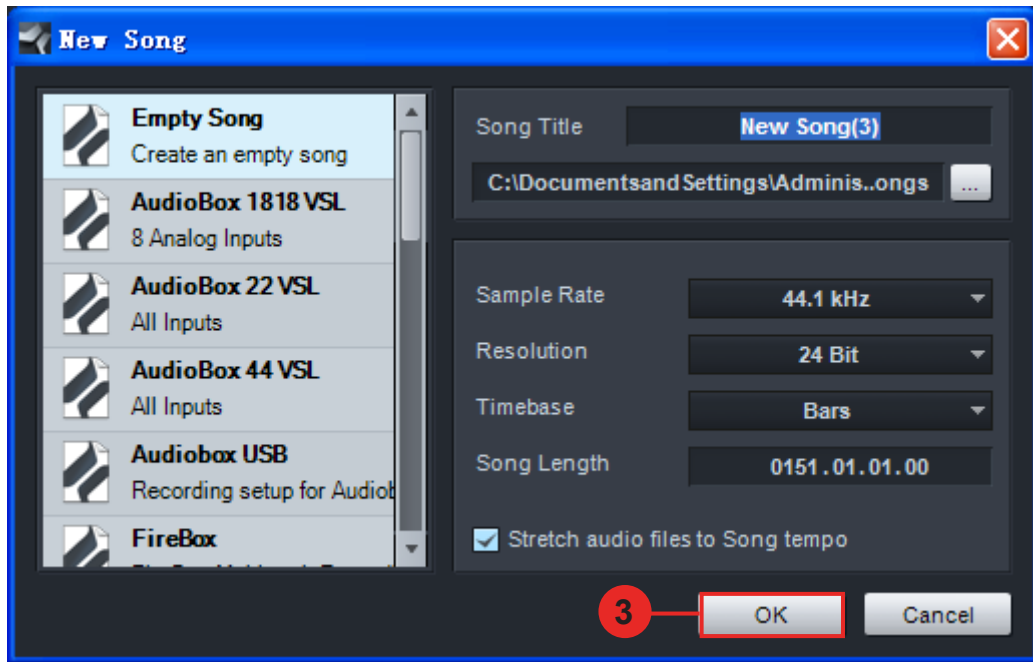
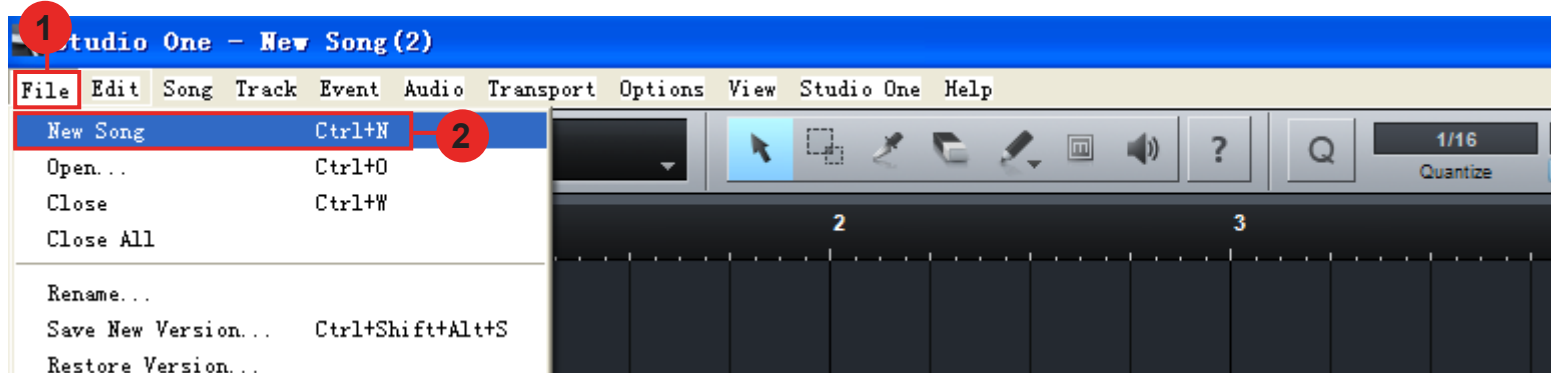


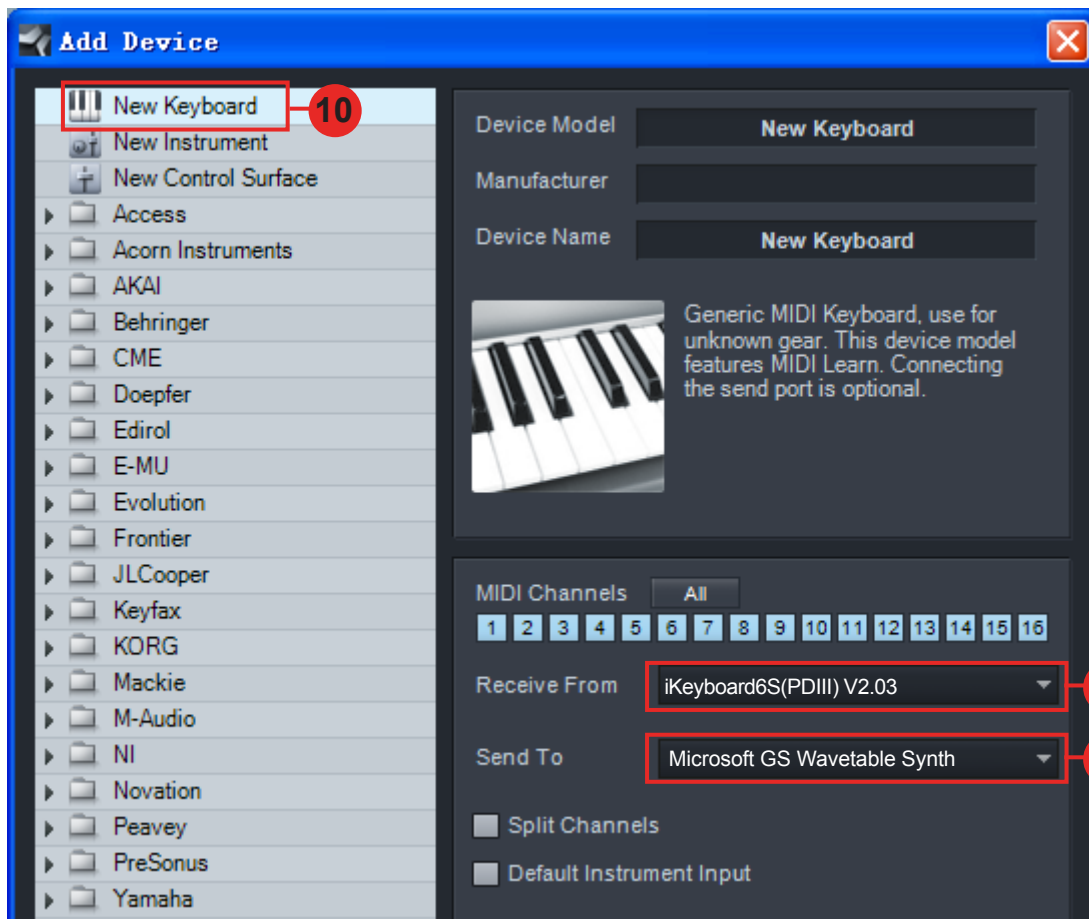
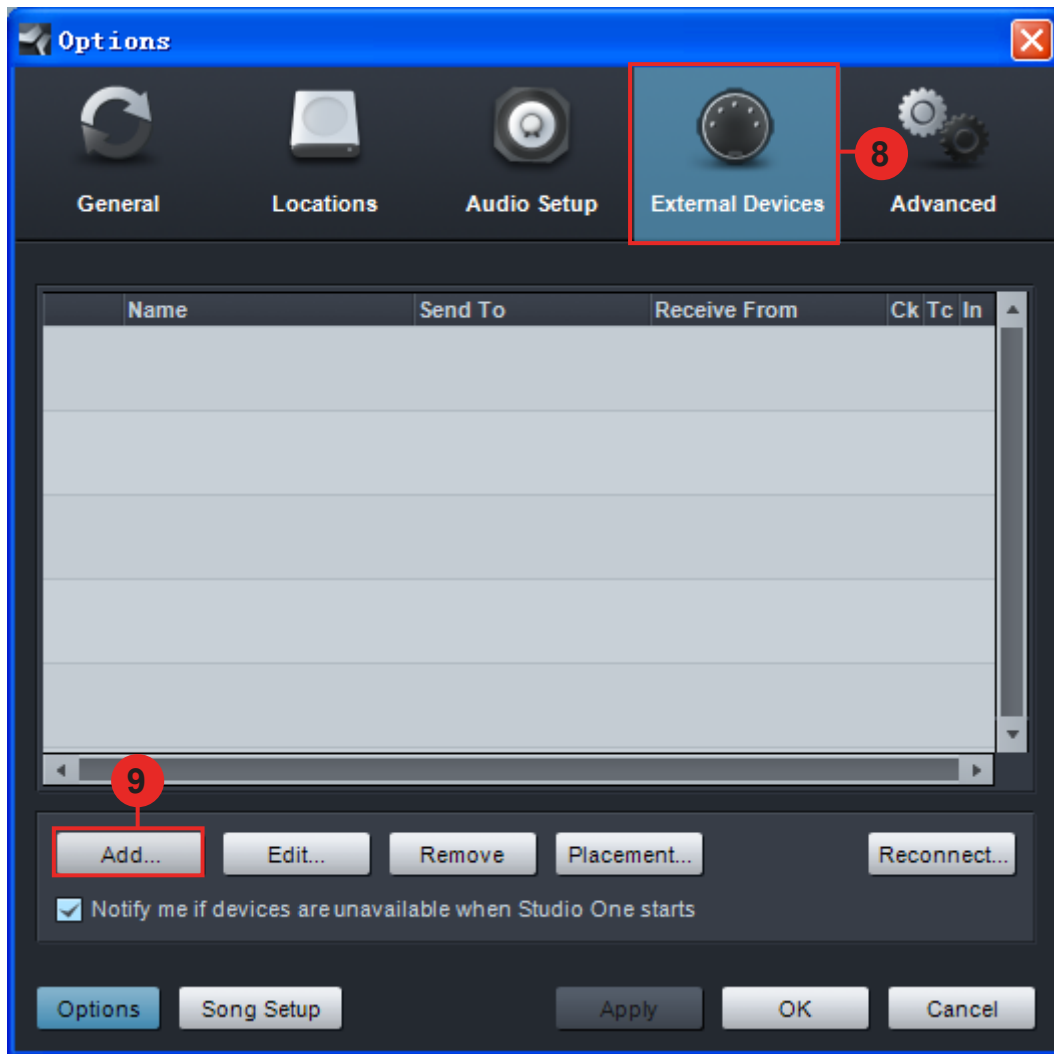
Setup up for your iKeyboard 6S(PDIII) controller section

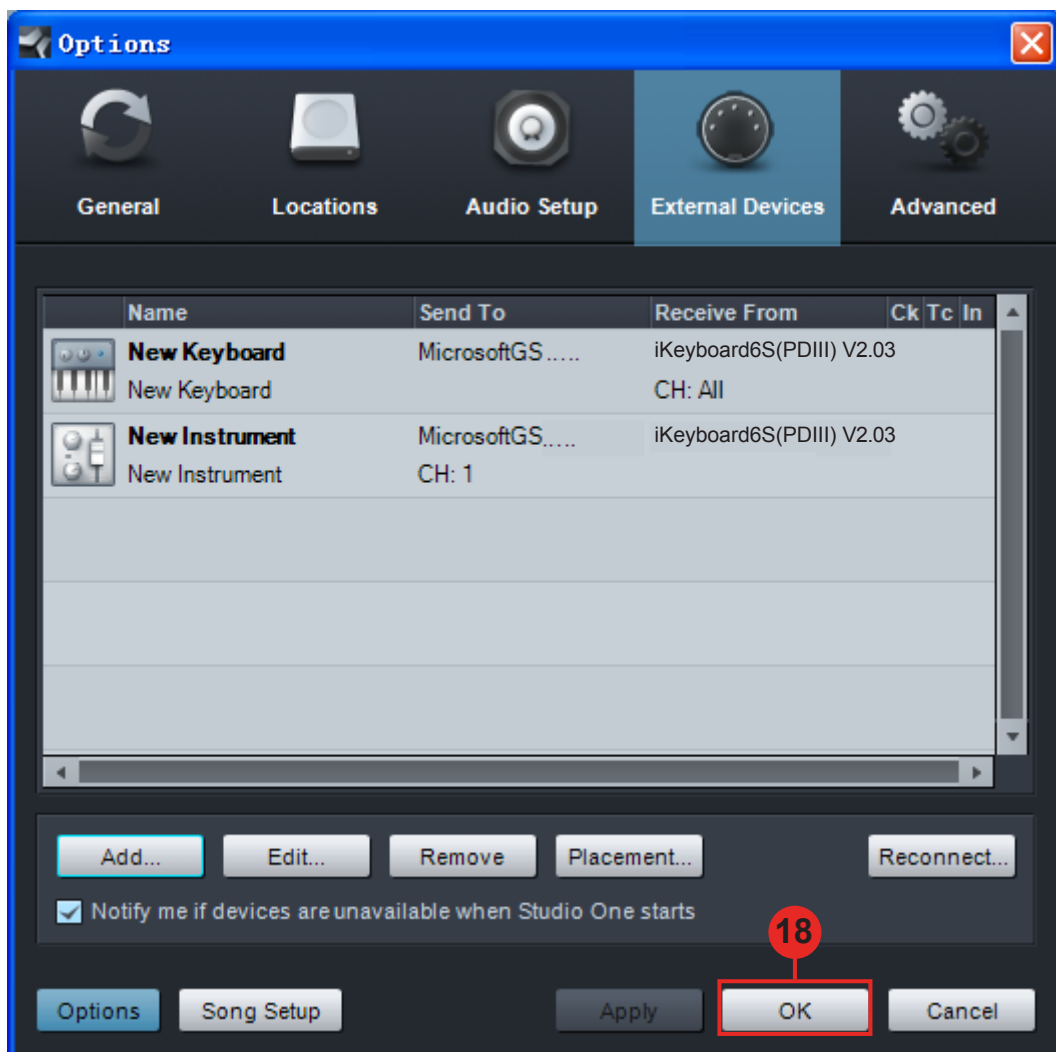
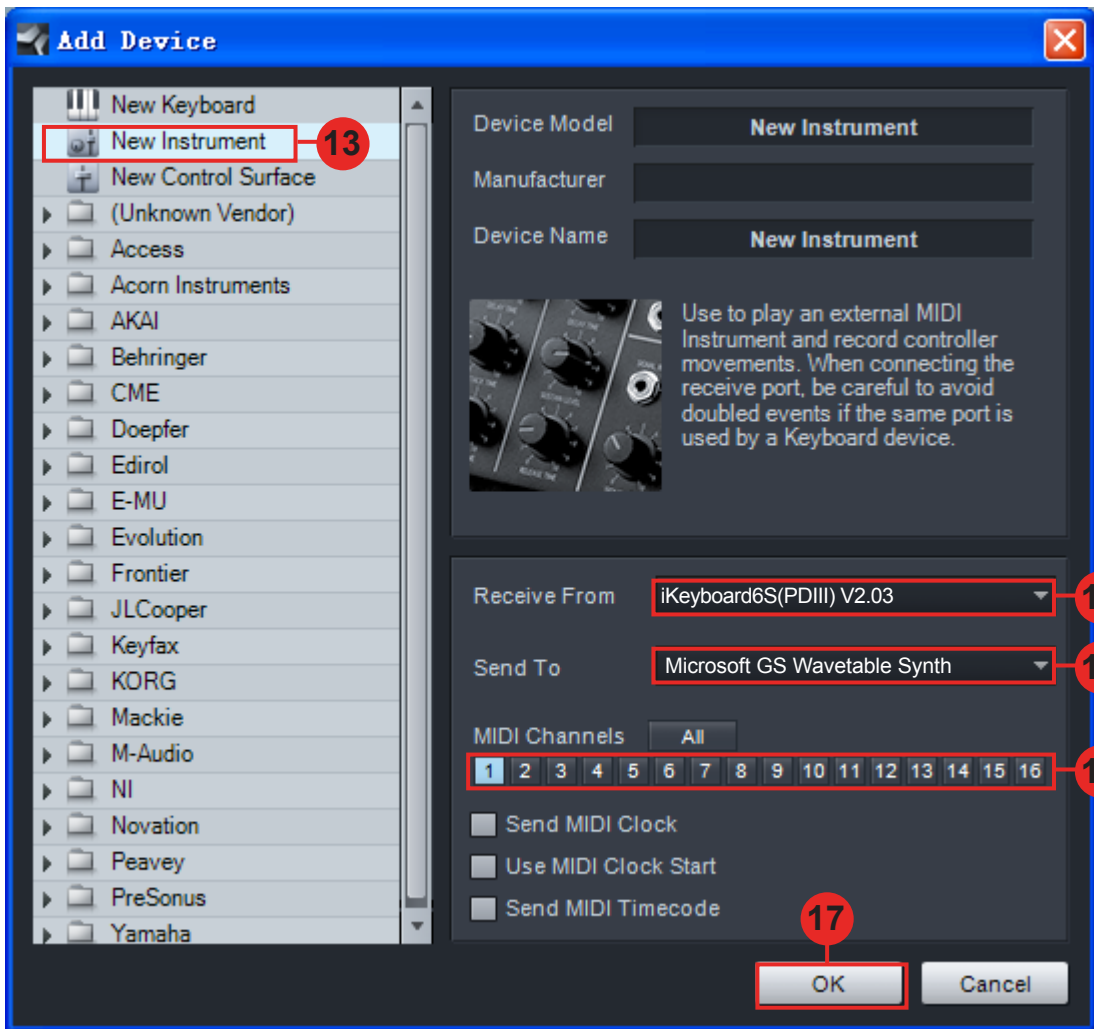




Setup for your iKeyboard 6S(PDIII) Keyswitch instrument input section







The screenshot displays the Studio One software interface. At the top, a menu bar includes 'File', 'Edit', 'Song', 'Track', 'Event', 'Audio', 'Transport', 'Options', 'View', 'Studio One', and 'Help'. Below the menu bar is a control bar with a 'Volume' knob set to '+10.0', a 'Main' dropdown, and various tool icons. The main workspace is divided into two sections. On the left, the 'Track 1' control panel is visible, featuring a 'New Instrument' button (circled in red with the number 19) and a 'New Keyboard' button (circled in red with the number 20). Below these buttons are options for 'None', 'All Inputs', and 'New Keyboard'. On the right, a piano roll is shown with a timeline marked from 1 to 73, with a 4/4 time signature indicated at the start.