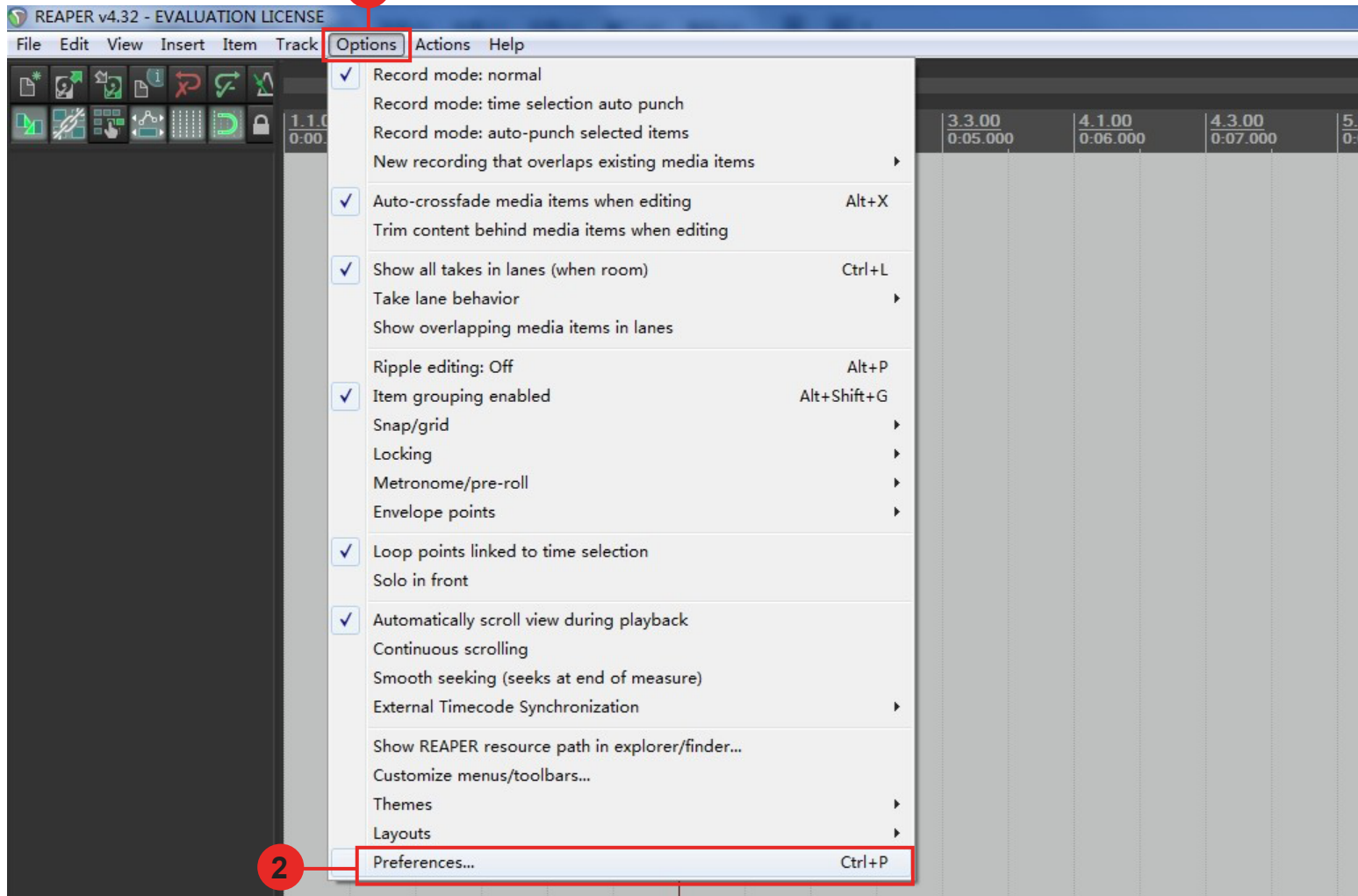
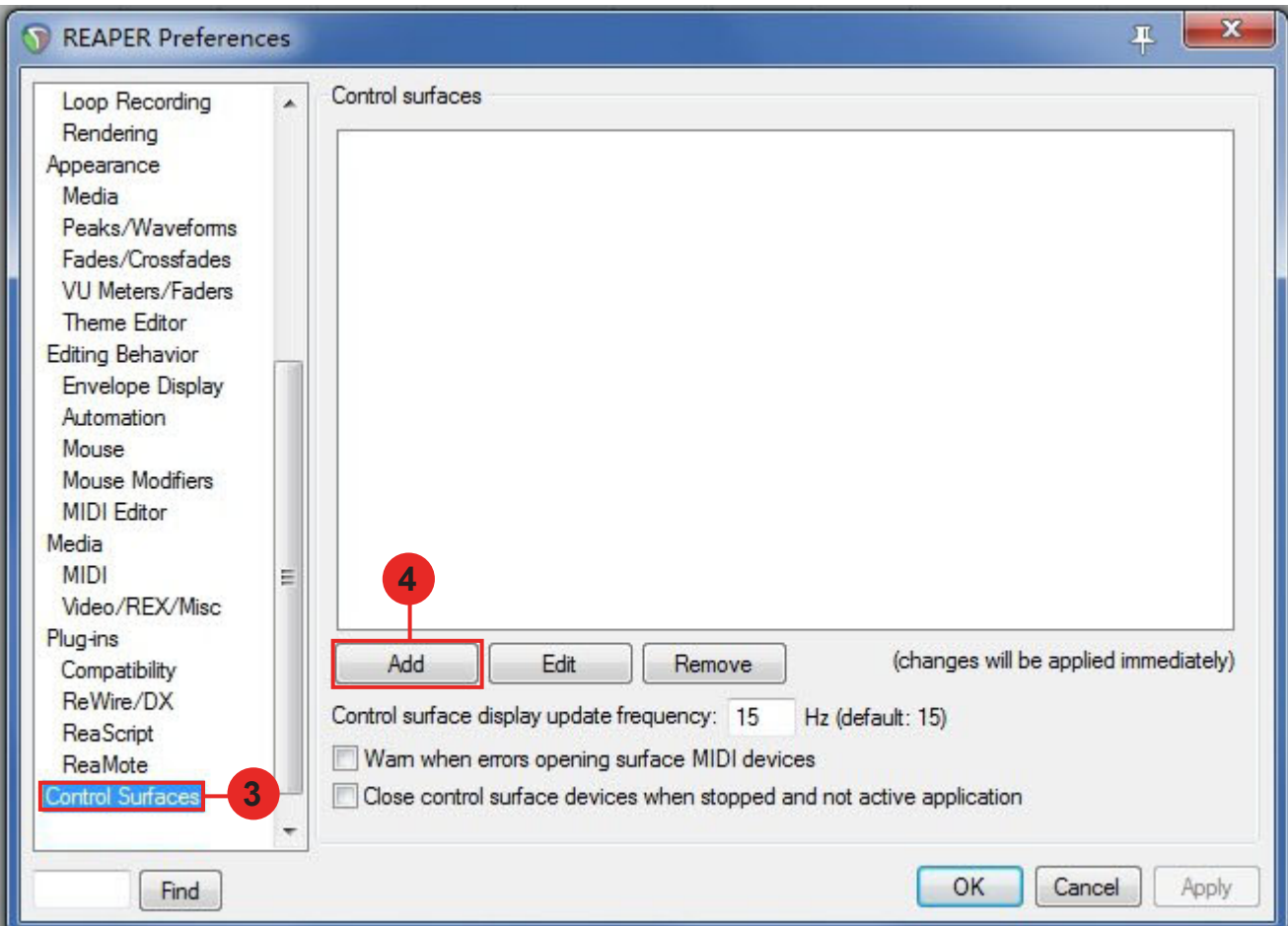


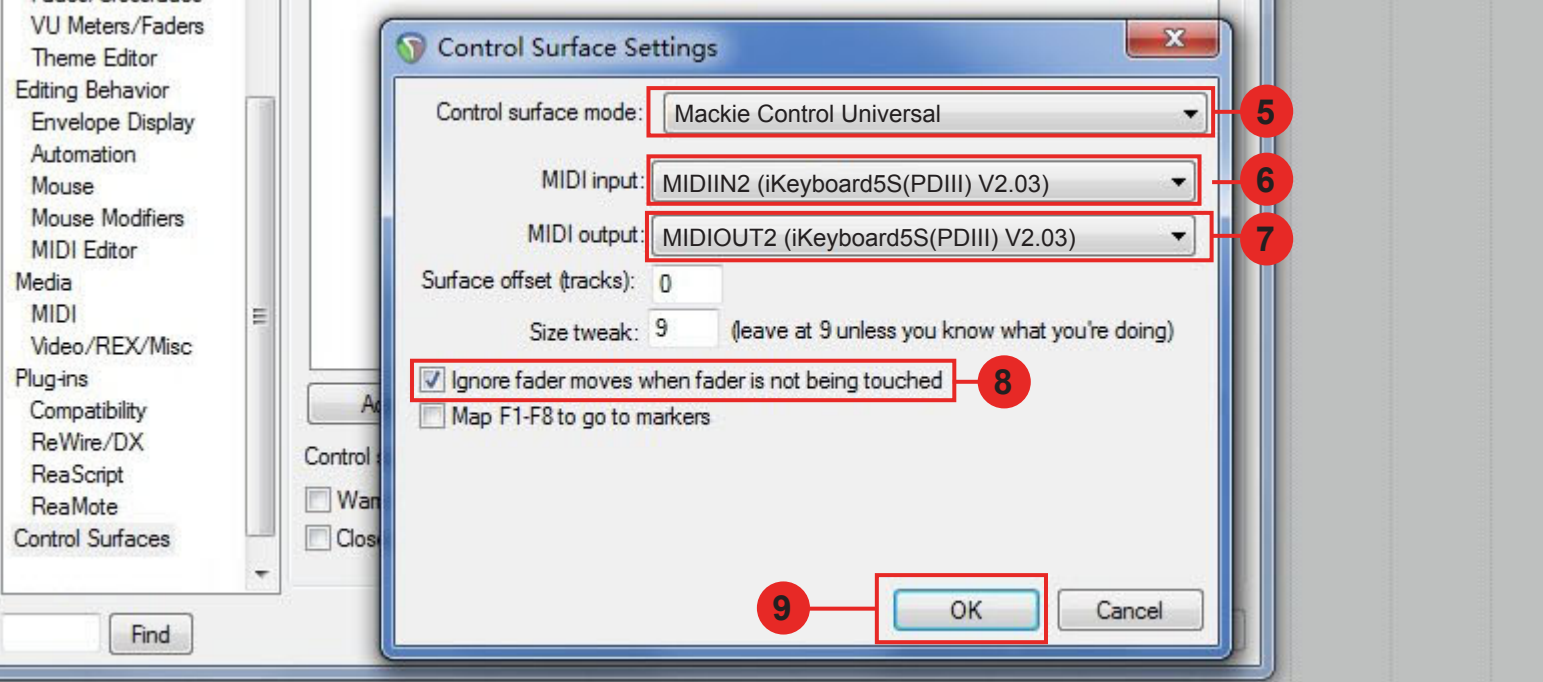
Setup up for your iKeyboard 5S(PDIII) controller section

1



2





5

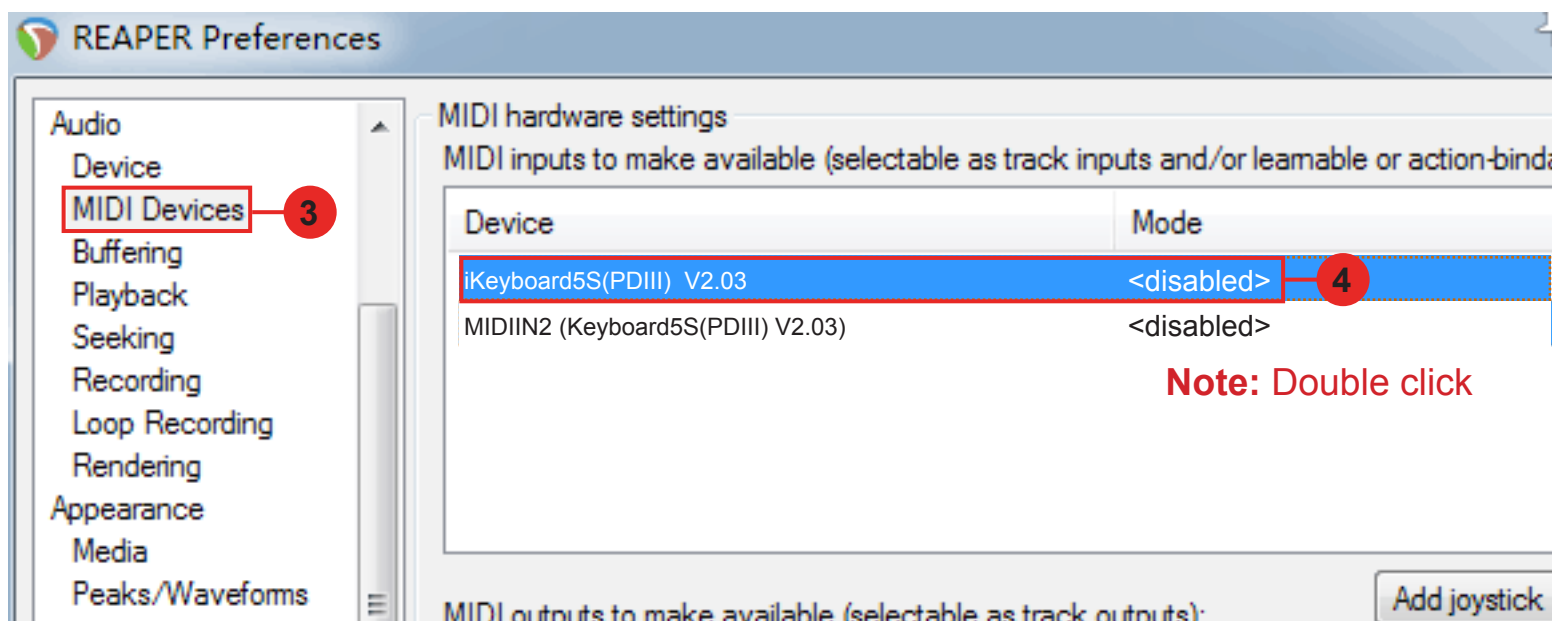
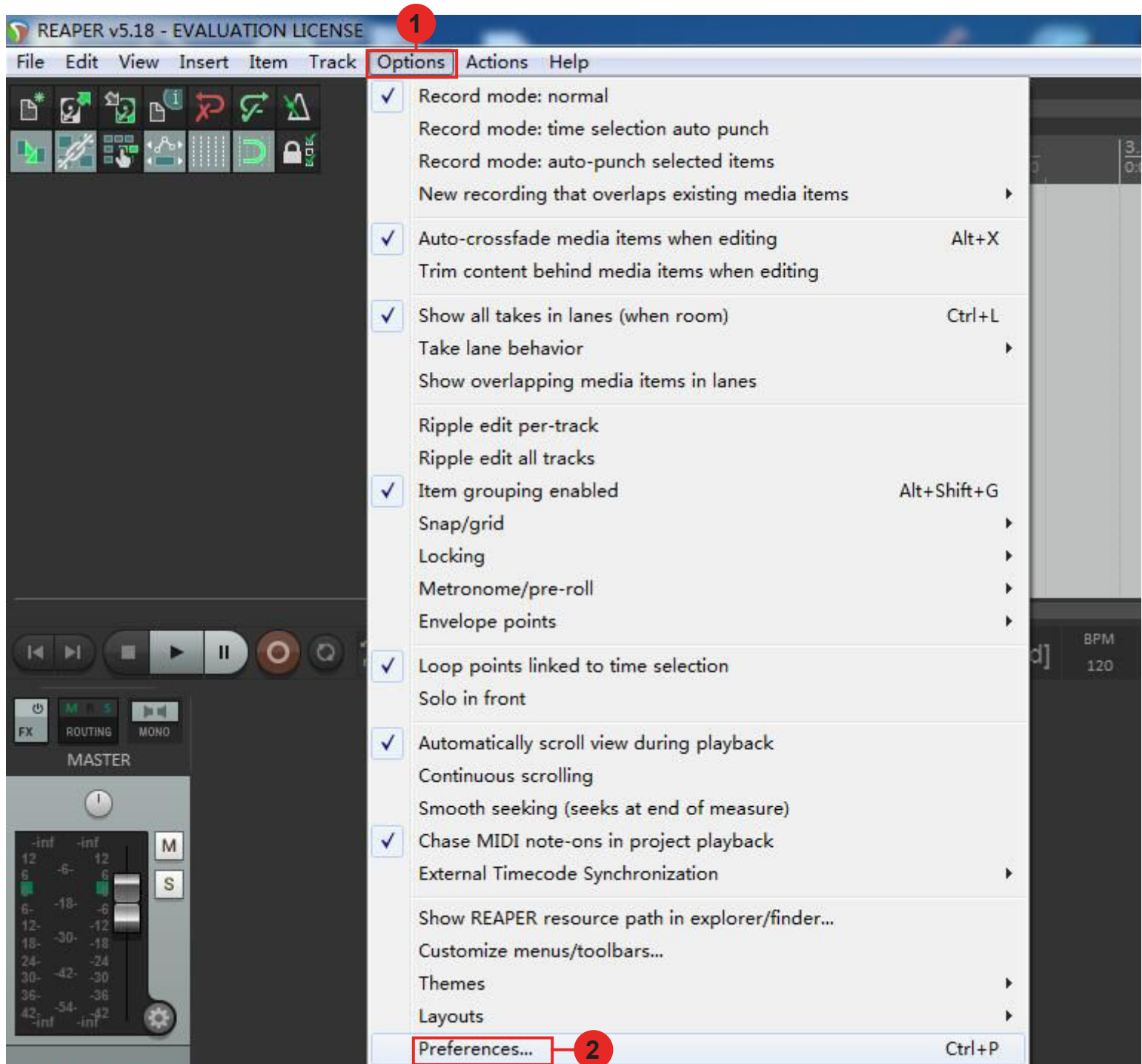
6

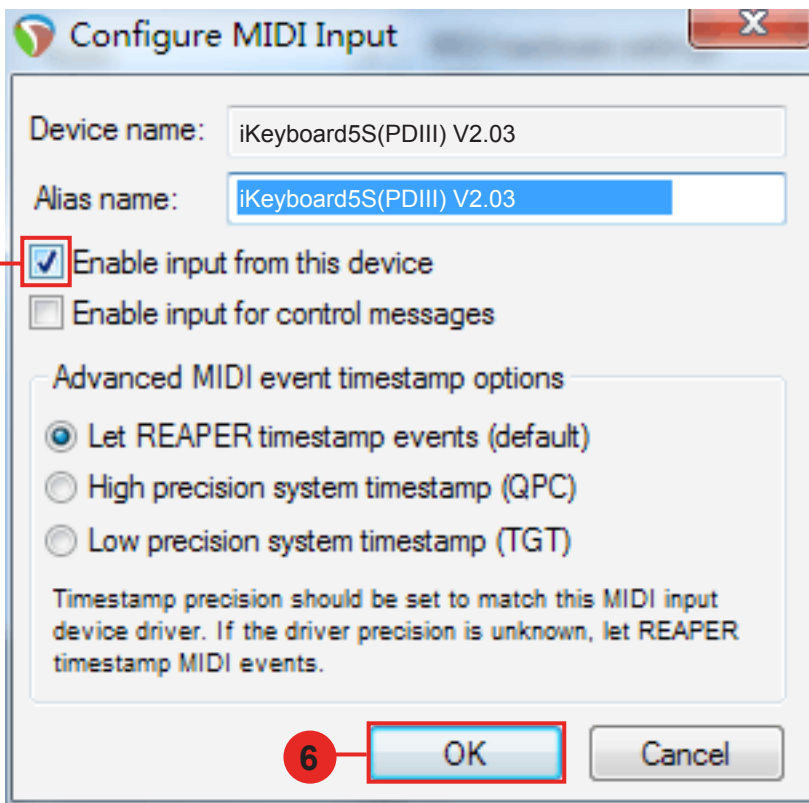
7

8

9

Setup for your iKeyboard 5S(PDIII) Keyswitch instrument input section





REAPER Preferences

- Audio
- Device
- MIDI Devices
- Buffering
- Playback
- Seeking
- Recording
- Loop Recording
- Rendering
- Appearance
- Media
- Peaks/Waveforms
- Fades/Crossfades
- Track Control Panels
- Editing Behavior
- Envelope Display
- Automation
- Mouse
- Mouse Modifiers
- MIDI Editor
- Media
- MIDI
- Video/REX/Misc
- Plug-ins

MIDI hardware settings

MIDI inputs to make available (selectable as track inputs and/or learnable or action-bindable):

Device	Mode
iKeyboard5S(PDIII) V2.03	<disabled>
MIDIIN2 (iKeyboard5S(PDIII) V2.03)	Enabled

MIDI outputs to make available (selectable as track outputs):

Device	Mode
Microsoft GS Wavetable Synth [use cautiously]	Enabled
iKeyboard5S(PDIII) V2.03	<disabled>
MIDIOUT2 (iKeyboard5S(PDIII) V2.03)	<disabled>

Restrict MIDI hardware output to one thread

Reset by: All-notes-off Pitch/sustain Reset on: Play Stop/stopped seek

Reset all MIDI devices

Note: Double click

