

**i**CON

# *Dragon*

Studio large-diaphragm condenser microphone







User manual



CE FC



EN1630

<div style="text-align: center;">  <div style="background-color: black; color: white; padding: 2px; font-weight: bold; margin: 5px 0;">CAUTION</div>  </div> <p style="text-align: center; font-size: small;">             RISK OF ELECTRIC SHOCK              DO NOT OPEN              RISQUE DE CHOC ELECTRIQUE              NE PAS OUVRIR         </p> <p style="text-align: center; font-size: x-small;">             CAUTION: TO REDUCE THE RISK OF ELECTRIC SHOCK              DO NOT REMOVE COVER (OR BACK)              NO USER-SERVICEABLE PARTS INSIDE              REFER SERVICING TO QUALIFIED PERSONNEL         </p> <p style="text-align: center; font-size: x-small;">             ATTENTION: POUR EVITER LES RISQUES DE CHOC              ELECTRIQUE: NE PAS ENLEVER LE COUVERCLE. AUCUN              ENTRETIEN DE PIECES INTERIEURES PAR L'USAGER. CONFIER              L'ENTRETIEN AU PERSONNEL QUALIFIE.              AVIS: POUR EVITER LES RISQUES D'INCENDIE OU              D'ELECTROCUTION, N'EXPOSEZ PAS CET ARTICLE              A LA PLUIE OU A L'HUMIDITE         </p>	<div style="display: flex; flex-direction: column; align-items: center;">   </div> <p style="font-size: x-small;">             The lightning flash with arrowhead symbol within an equilateral triangle is intended to alert the user to the presence of uninsulated dangerous voltage within the product's enclosure, that may be of sufficient magnitude to electric shock to persons. Le symbol clair avec point de flèche à l'intérieur d'un triangle équilatéral est utilisé pour avertir l'utilisateur de la présence à l'intérieur du coffret de voltage dangereux non isolé d'ampleur suffisante.         </p> <p style="font-size: x-small;">             exclamation point within an equilateral triangle is intended to alert the user of the presence of important operating and maintenance (servicing) instructions in the literature accompanying the appliance. Le point d'exclamation à l'intérieur d'un triangle équilatéral est employé pour avertir les utilisateurs de la présence d'instructions importantes pour le fonctionnement et l'entretien (service) dans le livret d'instruction accompagnant l'appareil.         </p>
---	--

## Important Safety Instructions

1. Read this manual thoroughly before using this unit.
2. Keep this manual for future reference.
3. Take notice of and comply with all warnings included in the user's manual or indicated on the appliance.
4. Follow all instructions included in this manual.
5. Do not expose this unit to rain or moisture. Avoid having water or other liquids spilled on this unit.
6. When cleaning the cabinet or other parts of this appliance, use only a dry or slightly damp soft cloth.
7. Do not block any ventilation openings or interfere with the proper ventilation of this unit. Install in accordance with the manufacturer's instructions.
8. Do not use or store near any heat sources such as radiators, heat registers, stoves, or other heat-producing appliances.
9. Do not interfere with the safety purpose of the polarized or grounding-type plug. A polarized plug has two blades with one wider than the other. A grounding-type plug has two blades and a third grounding prong. These are designated for your safety. If the provided plug does not fit into your outlet, consult an electrician.
10. Protect the power cord from being walked on or otherwise damaged by items placed on or against them. Particular attention should be given to the plugs, receptacles, and the point where the cord exits the appliance.
11. To avoid the risk of electrical shock, do not touch any exposed wiring while the unit is in operation.
12. Only use attachments/accessories specified by the manufacturer.
13. Unplug this unit and all connected electrical equipment during lightning storms or when left unused a long period of time.
14. Refer all servicing to qualified service personnel. Servicing is required when the appliance has been damaged in any way or fails to operate normally.

**WARNING: To reduce the risk of fire or electric shock, do not expose this unit to rain or moisture**

# Contents

- Introduction .....4
- What's in the package? .....4
- Register your ICON ProAudio product to your personal account .....5
- Features .....6
- Operating the Dragon LD-3 .....7
- Specifications .....9
- Services..... 10

# ***Introduction***

Thank you for purchasing the ICON ProAudio Dragon LD-3 studio large-diaphragm condenser microphone. We sincerely trust this product will provide years of satisfactory service, but if anything is not to your complete satisfaction, we will endeavor to make things right.

In these pages, you'll find a detailed description of the features of the LD-3, step-by-step instructions for their setup and use, and full specifications.

Please register the product on our website at the below link  
[www.iconproaudio.com/registration](http://www.iconproaudio.com/registration):

Please follow the step by step procedures. Start by inputting the device's serial number as well as your personal information, etc. By registering your product online, you will be entitled to service and after-sales support at our Help Center by visiting our website at [www.iconproaudio.com](http://www.iconproaudio.com). Also, all the registered products under your account will be listed on your personal product page where you will find updated information such as firmware/driver upgrades, software bundles, user manual downloads, etc. for your device.

As with most electronic devices, we strongly recommend you retain the original packaging. In the unlikely event the product must be returned for servicing, the original packaging (or reasonable equivalent) is required.

With proper care and adequate air circulation, your LD-3 will operate without any trouble for many years.

## ***What's in the package?***

- Dragon LD-3 Studio large-diaphragm condenser microphone
- This User Manual
- Suspension Shock mount
- Carry case

# Register your ICON ProAudio product to your personal account

## 1. Check serial number of your device

Please go to <http://iconproaudio.com/registration> or scan the QR code below.

Input your device's serial number and the other information on the screen. Click "Submit".



A message will pop up showing your device information such as model name and its serial number - Click "Register this device to my account" or if you see any other message, please contact our after-sales service team

## 2. Log in to your personal account page for existing user or sign up for new user

Existing user: Please log into your personal user page by inputting your user name and password.

New user: Please click "Sign Up" and fill in all the information.

## 3. Download all useful materials

All your registered devices under your account will show on the page. Each product will be listed along with all its available files such as drivers, firmware, user manual in different languages and bundled software etc. for download. Please make sure you have download the necessary files such as driver before you begin device installation.

# Features



- Professional Large-diaphragm condenser microphone for unsurpassed audio quality
- Ideal as main and support microphone for most differing recording situations
- Cardioid pickup pattern for outstanding sound source separation and feedback rejection
- Pressure-gradient transducer with shock-mounted capsule
- Prefect for vocals and acoustic instruments
- External 36-52 Volt phantom power operation
- Heavy-duty suspension mount included
- Ultra-rugged construction with metal die-cast body
- High-quality components and exceptionally rugged construction ensure long lift
- Metal pop filter is included
- Suspension shock mount is included
- Durable carry case is included

# ***Operating the Dragon LD-3***

## **1. Powering the Dragon LD-3**

The "LD-3" is a large diaphragm condenser microphone and therefore needs to be operated by connecting a phantom power supply. Phantom power is standard on most quality mixers, outboard MIC-pres and hard disk recorders. If necessary an external phantom power supply can also be used. The "LD-3" receives the phantom power directly from a MIC cable when connected to a mixer or other microphone input that includes a phantom supply. The power is actually sent OUT of the microphone INPUT, riding silently along with the audio signal. Most mixers have a switch to engage the phantom power so be sure to check that the phantom power is on.

## **2. Setting up the signal level**

When connecting the "LD-3" to a mixer or recorder input, be sure that the input is of microphone level. Also, be sure that the phantom power is engaged as explained at the previous section "Powering the LD-3". Most mixers and recorders of reasonable quality will offer a microphone input with MIC trim (usually called Trim or Gain) control. The purpose of the MIC trim control is to optimize the amount of good signal to any noise associated with the mixers electronics. A good MIC pre with trim also will have a Peak or Clip LED. To set a good level on the MIC, set the "LD-3" up in front of the desired sound source and slowly raise the MIC trim control until you see the Peak LED light up. Then, turn the mix trim control down until the LED does not light any more. On most mixers, the ideal setting is that the trim control is turned up as much as possible without lighting the Peak LED.

## **3. Microphone Placement**

In order to maximize the sound quality, you must pay careful attention to the placement of your "LD-3" and how it is positioned for the instrument or vocalist that you are miking. All microphones, especially unidirectional or cardioid microphones, exhibit a phenomenon know as the "proximity effect". Very simply put, proximity effect is a resulting change in the frequency response of a microphone based on the position of the MIC capsule relative to the sound source. Specifically, when you point a cardioid MIC directly at the sound source (on-axis) you will get the best frequency response, however, when you start pointing the microphone slightly away (off-axis) you will notice the low frequency dropping off and the microphone will start to sound thinner.

For most vocal applications you'll want to position the microphone directly in front of the artist. The same may be true for miking instruments. However, you can make some pretty amazing equalization adjustments by slightly changing the angle of the capsule to the sound source. This can be a very useful technique in capturing the optimum sound of drum set, acoustic guitar, piano or other instruments in a live room or sound stage. Experimentation and experience are the best teachers in getting good sounds, so plug in!

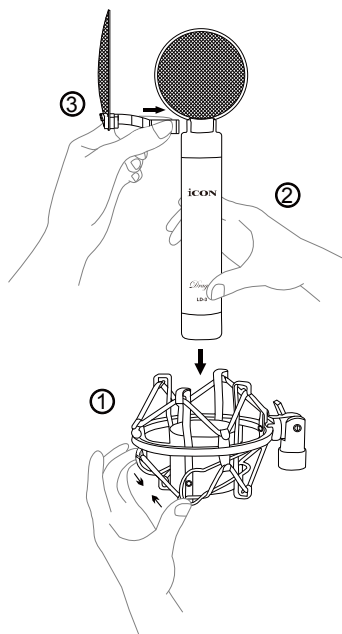
#### 4. P-Poping

P-Poping is that annoying pop that you can get when the microphone diaphragm gets a blast of air from a vocalist pronouncing words with the letter "P" included. "LD-3" is shipped with a professional metal shield pop filter that will eliminate the popping effect.

Also, there are a few ways to deal with the problem including using an external pop filter. Some famous engineers have relied on an old nylon stocking over a bent clothes hanger, which actually works very well. For a cleaner solution, try ICON PF-01 pop filter. You can also try placing the microphone slightly off axis (on a slight angle) from the vocalist. This can often solve the problem without using an external pop filter.

#### 5. Mounting the "LD-3"

Mount your "LD-3" into the provided suspension mount as the diagrams illustrated below.





# Specifications

Acoustical operating principle.....	Pressure gradient transducer
Directional pattern .....	Cardioid
Frequency range .....	20Hz – 20KHz
Sensitivity .....	-37dBV/Pa
Rated Impedance .....	200 Ohms
Min. load impedance .....	1000 Ohms
SPL.....	144dB
S/N ratio.....	78dB
Dynamic range .....	128dB
Power supply voltage .....	48V +/-3V
Current consumption .....	4mA
Weight (Microphone only).....	0.27Kg (0.55lb)
(with suspension mount).....	0.39Kg (0.95lb)
Dimensions.....	53mm (dia.) x170m (L)
.....	2.0" (dia.) x 6.7" (L)

# Services

## **If your LD-3 needs servicing, follow these instructions.**

Check our online Help Center at <http://support.iconproaudio.com/hc/en-us>, for information, knowledge, and downloads such as:

1. FAQ
2. Download
3. Learn More
4. Forum

Very often you will find solutions on these pages. If you don't find a solution, create a support ticket at our online Help Center at the link below, and our technical support team will assist you as soon as we can.

Navigate to <http://support.iconproaudio.com/hc/en-us> and then sign in to submit a ticket.

As soon as you have submitted an inquiry ticket, our support team will assist you to resolve the problem with your ICON ProAudio device as soon as possible.

To send defective products for service:

1. Ensure the problem is not related to operation error or external system devices.
2. Keep this owner's manual. We don't need it to repair the unit.
3. Pack the unit in its original packaging including end card and box. This is very important. If you have lost the packaging, please make sure you have packed the unit properly. ICON is not responsible for any damage that occurs due to non-factory packing.
4. Ship to the ICON tech support center or the local return authorization. See our service centers and distributor service points at the link below:

If you are located in US  
Send the product to:  
North America  
Mixware, LLC – U.S. Distributor  
11070 Fleetwood Street – Unit F.  
Sun Valley, CA 91352; USA  
Tel.: (818) 578 4030  
Contact: [www.mixware.net/help](http://www.mixware.net/help)

If you are located in Hong Kong  
Send the product to:  
ASIA OFFICE:  
Unit F, 15/F., Fu Cheung Centre,  
No. 5-7 Wong Chuk Yueng Street,  
Fotan,  
Sha Tin, N.T., Hong Kong.

If you are located in Europe  
Send the product to:  
Sound Service  
GmbH European  
Headquarter Moriz-Seeler-Straße  
3D-12489 Berlin  
Telephone: +49 (0)30 707 130-0  
Fax: +49 (0)30 707 130-189  
E-Mail: [info@sound-service.eu](mailto:info@sound-service.eu)

5. For additional update information please visit our website at:  
[www.iconproaudio.com](http://www.iconproaudio.com)



天猫官方旗舰店



天猫店iconproaudio旗舰店

抖音号



抖音iCON艾肯

哔哩哔哩



B站iCONProAudio  
中国地区用户

微信公众号



微信号iCON-PRO

官方售后QQ



4006311312.114.qq.com

Twitter



[www.twitter.com/iconproaudio](https://www.twitter.com/iconproaudio)

Instagram



[www.instagram.com/iconproaudio](https://www.instagram.com/iconproaudio)

Facebook



[www.facebook.com/iconproaudio](https://www.facebook.com/iconproaudio)

Youtube



[www.youtube.com/iconproaudio](https://www.youtube.com/iconproaudio)

Website



[www.iconproaudio.com](http://www.iconproaudio.com)

Support



[support.iconproaudio.com](http://support.iconproaudio.com)

Dashboard



[iconproaudio.com/dashboard/](http://iconproaudio.com/dashboard/)

[www.iconproaudio.com](http://www.iconproaudio.com)