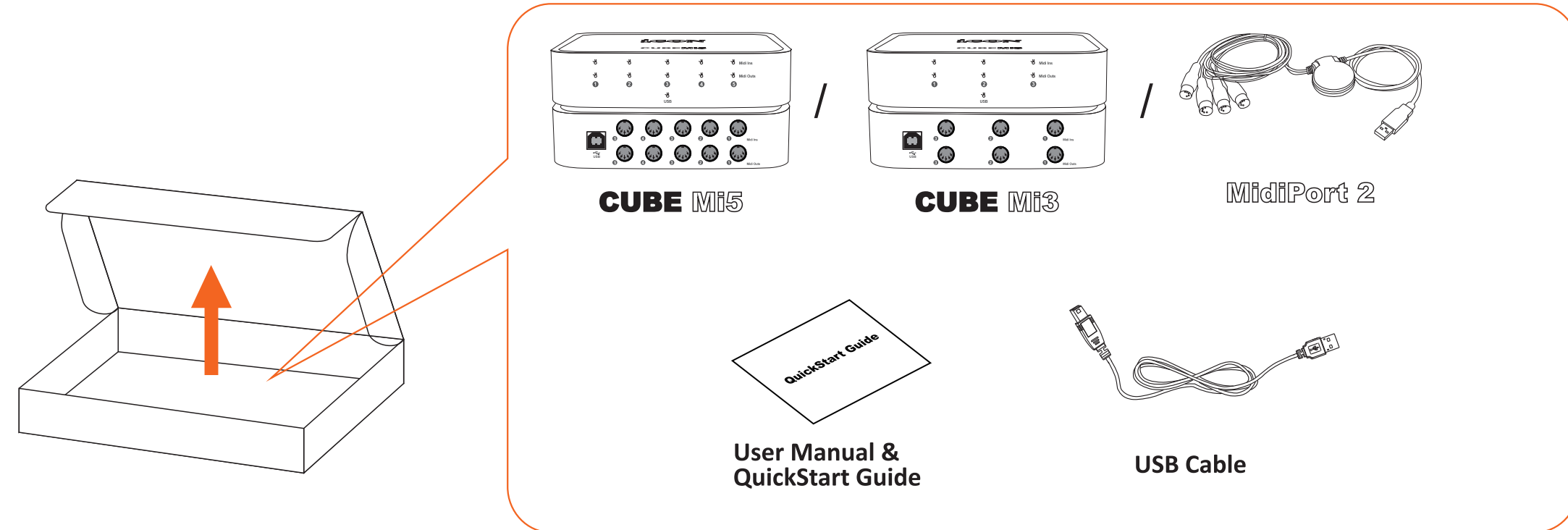


## 1 Unpack



**Note:** Cube Mi5 / Cube Mi3 / MidiPort 2 USB2.0 MIDI interface in Pack

## 2 MAC Turn on your Mac

Connect the USB cable provided between a USB port on your Mac and the USB port on your USB MIDI interface. Your Mac should “find” the interface and install its driver automatically.



## 3 Set up your DAW or MIDI software

Activate the ICON USB MIDI ports in your DAW or MIDI software using “MIDI setup” or “MIDI devices”  
(Note: Every application does this a little differently, so refer to your software user manual for the settings.)

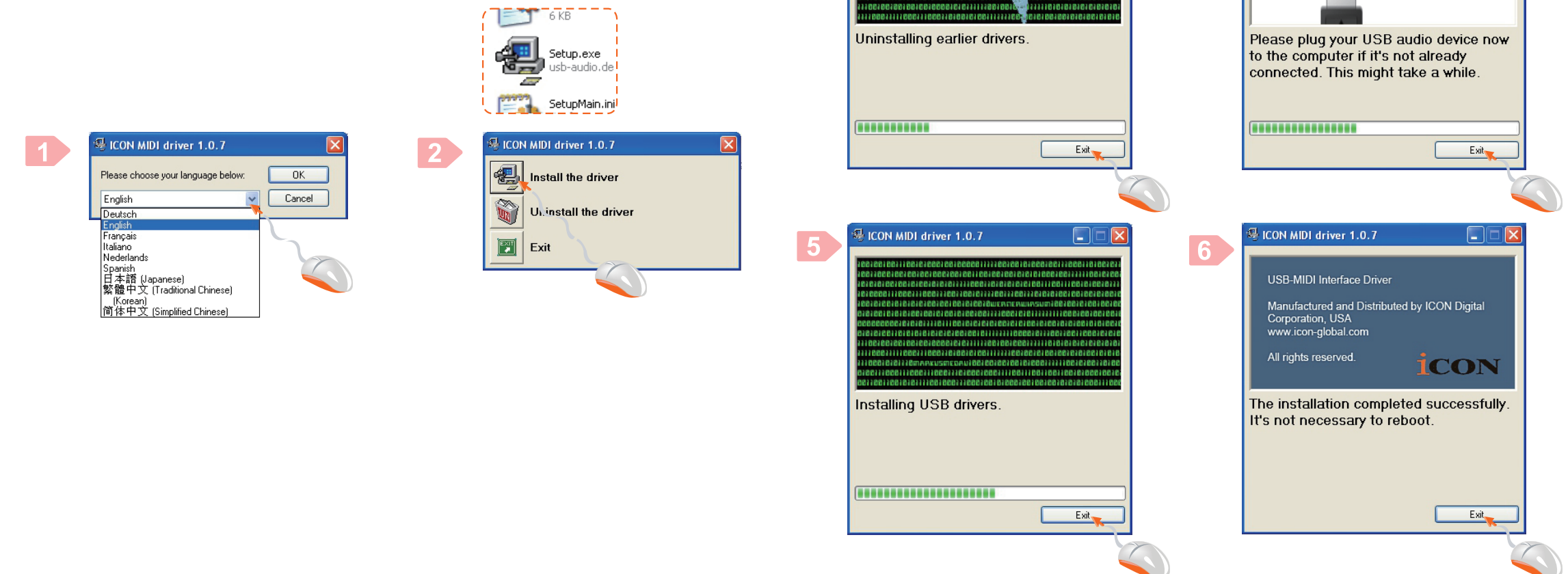
## 4 PC Turn on your computer

Connect the USB cable provided between a USB port on your PC and the USB port on your USB MIDI interface. Your PC should “find” the interface and install its driver automatically.



## 5 Install the MultiPlat™ software driver

Please visiting [www.iconproaudio.com](http://www.iconproaudio.com) and go to the product page's download section to download its driver. Follow the step by step instructions to complete the installation.



## 6 Set up your DAW or MIDI software

Activate the ICON USB MIDI ports in your DAW or MIDI software using “MIDI setup” or “MIDI devices”  
(Note: Every application does this a little differently, so refer to your software user manual for the settings.)